



THE NEWS

OF THE
MELBOURNE BUSHWALKERS INCORPORATED

EDITION 499

SEPTEMBER 1992

PRICE 60 C

Registered by Australia Post

Publication No. VBH 1297

PRESIDENT'S WEEKEND - 12-13 DECEMBER

This year we will resurrect the President's weekend. Plans are for it to be a walk-in base camp near enough to Melbourne to combine with the day walkers for Sunday walks and afternoon tea.

Keep the date free and watch for more details later.

BUSHIES BURIED IN AVALANCHE !!

Five bushies on a recent Wilkie trip in the High Plains were buried almost totally in snow when an overhang broke away and caused a mini-avalanche, engulfing them as they skied across its path.

Everyone was dug out without any injuries being sustained, but it caused a few hearts to race. For further details see inside, page 7, "A Week in Wilkie".

GOODBYE JOHN

The Committee has received notice from John Dupuy, who has been driving us on our Sunday walks for the best part of the last three years. John has taken up a full-time union position which will preclude him from spending his Sundays with us. Writing to our President, Jean, he says "...I would like to take this opportunity to thank you, your committee and all members for making my Sundays over the last three years so enjoyable and to also thank you all for your much appreciated friendship over this time." John adds that he would like to get fit and to walk with us as a Club member at some time in the future.

John has arranged for Bob Bertram to take over as driver. Bob has already driven for us on several occasions, and he is an experienced, long-term employee of the Peninsula Bus Company.

The Committee has written to thank John, and I am sure that our regular Sunday walkers will wish to add their thanks to John for his help and co-operation and to wish him every success in his new job.

Derrick Brown, Secretary

Correspondence should be directed to: The Secretary
Melbourne Bushwalkers Inc.
PO Box 1751Q
MELBOURNE 3001

Meetings are held in the clubrooms, Mackenzie St Melbourne (rear of the Horticultural Society building) every Wednesday night 7.00-9.00 p.m. Visitors are always welcome.

Please note that articles for "The News" may be faxed to the News Convenor on

Closing date for the October edition is Wednesday 30 September 1992.

PRESIDENT'S NOTES

I have been holidaying in my home state of Western Australia for 3 weeks, enjoying being with family and old friends. As well, I had some good rides on a borrowed bike around the Swan and Canning Rivers and some pleasant walking, including 2 days in the Stirling Ranges. (Never been there before.) I'm afraid I have to say that the WA wildflowers leave the Victorian ones for dead. No, I am not on commission from the WA Tourist Bureau but I do recommend a visit in the winter or spring.

* * * * *

From time to time we hear from our Treasurer of 1989 and 1990, *Rick Chater*, who was transferred to Sydney at the beginning of 1991. He has kept up his interest in the Club and wishes to be remembered to his old walking mates. He is looking forward to returning to us early next year after spending his holidays in Mexico and the Caribbean.

* * * * *

Welcome home from Hong Kong to *Pat and Paul Gray*, in Melbourne until Christmas, then off to work in Western Australia.

* * * * *

Some of us are most fortunate with our holidays and all. Some are having a hard time in the recession. As the economy begins to pick up we trust those members who have been out of work will find worthwhile jobs. It has been good to be able to offer half-fare concessions on the bus and keep the membership subscription down during these difficult years.

* * * * *

Thank you to Anne Casey of the Victorian National Parks Association who last month gave a most interesting presentation to the Club on the proposed Central Highlands Park. The Club donated \$350 to the VNPA campaign for a new National Park which would cover many of the areas where we do a lot of day as well as weekend walking.

Jean Giese, President

BUSH DANCE

Where: South Melbourne Town Hall
When: Friday 23 October 1992, 8.00 p.m.
Cost: \$10

The band is the Woolly Bull Bush Band.

See John Tolmie in the clubrooms for tickets.

SAILING

An agile forward hand is required regularly on a Hartley 16 ft trailer sailor.

We do half-day races or whole-day cruises in company with other identical boats. Experience not necessary.

Tony Stapley

DAY WALKS - OCTOBER 1992**SUN 4 OCT 92 MT ROBERTSON STATE FOREST - GUM CREEK E/MED & MEDIUM**

LEADERS : MARGARET BORDEN & JEAN GIESE
 TRANSPORT : BUS FROM SOUTH BANK BLVD. AT 9.00 A.M.
 EXPECTED RETURN : 7.00 P.M.
 MAP REFERENCE : PHEASANT CREEK 1:25,000
 APPROX DISTANCE : 15 & 20 KM

Both walks will include open forest, fern gullies, views and wildflowers - what more could one ask on a lovely spring Sunday? A stiff climb or two, good company? Margaret and I will supply the lot!

Commencing north of Kinglake Central, we will be mainly in Mt Robertson State Forest descending from the Great Dividing Range to finish where Gum Creek joins King Parrot Creek. The harder walk will have more climbing and some bush-bashing.

SUN 11 OCT 92 TARAGO RIVER EASY & MEDIUM

LEADERS : ROSA D'ANGELO & MARY LEONARD
 TRANSPORT : BUS FROM SOUTH BANK BLVD. AT 9.00 A.M.
 EXPECTED RETURN : 7.00 P.M.
 MAP REFERENCE : NEERIM 1:25,000
 APPROX DISTANCE : 12 & 18 KM

The Tarago River and Reservoir lie approximately half-way between Noojee and Drouin, east of Melbourne. The walk will be through the Tarago LaTrobe State Forest. Along tracks like the Bellbird Creek Track, South Hells Gate Track - should we try the Forbidden Road? We may find a mill site or two. We may even get in a swim before the day is through. The area is gently undulating. The only difference between the walks is that the easy/medium walk will be longer.

SUN 18 OCT 92 CATHEDRAL RANGE EASY/MED & MEDIUM

LEADERS : ED LITTLE & IAN NEWBOLD
 TRANSPORT : BUS FROM SOUTH BANK BLVD. AT 9.00 A.M.
 EXPECTED RETURN : 7.00 P.M.
 MAP REFERENCE : CATHEDRAL RANGE ALGONA GUIDE MAP WITH TRACK NOTES
 APPROX DISTANCE : 15 KM

The Cathedrals are a pleasant bus trip of approximately 100 km east of Melbourne. The walk will start at the (abandoned) Cooks Mill site. It is then a steady uphill on to the Razor Back with guaranteed lyre bird callings along the way! Then south along Razor Back and drop down to the Sugar Loaf Hut, to return north along the road to join the bus. If the day is fine great viewing of the Acheron Valley will be had on top of the Razor Back. This walk should be suitable for all comers.

WED 21 OCT 92 ANGAHOOK FOREST EASY/MEDIUM

LEADER : MARGARET BORDEN
 TRANSPORT : PRIVATE
 MEETING PLACE : 8.30 A.M. WESTGATE PARK CAR PARK (MELWAYS 56 F1), OR
 10.00 A.M. DISTILLERY CK PICNIC AREA, ANGAHOOK STATE PARK
 (3.5 km along Bamba Road, Airey's Inlet)
 EXPECTED RETURN : 6.00 P.M.
 MAP REFERENCE : OUTDOOR LEISURE MAP, OTWAYS & SHIPWRECK COAST
 APPROX DISTANCE : 18 KM

We will go around Ironbark Gorge and up the start of Currawong Falls track, then veer across to Painkalac Dam and Moggs Creek picnic area. The wattles and wildflowers should be superb and wonderful views of the ocean and surrounding hills.

SUN 25 OCT 92 GREEN'S BUSH - CAPE SCHANK**EASY & MEDIUM**

LEADERS : JAN GROSS & ALAN TOMSETT
 TRANSPORT : BUS FROM SOUTH BANK BLVD. AT 9.00 A.M.
 EXPECTED RETURN :
 MAP REFERENCE :
 APPROX DISTANCE :

For details of this walk, please see the leaders in the clubrooms.

SAT 31 OCT 92 DANDENONGS: OLINDA STATE FOREST**EASY**

LEADERS : PAM WESTGATE & KATH FITZGERALD
 TRANSPORT : PRIVATE OR TRAIN
 EXPECTED RETURN : 4.00 P.M. TO CAR PARK
 MAP REFERENCE : MELWAYS MAPS 120, 122
 APPROX DISTANCE : 11 KM

Meet at Olinda Falls car park (Falls Road, Melways 66 KI) at 11.00 a.m. for an 11.15 a.m. departure. The Olinda State Forest has some interesting contrasts in vegetation, including rainforests and ferns and drier forests with wildflowers. We plan a round trip along the creek to Olinda Creek Road, Bartletts Road, then through the forest and via Rifle Range Gully Road to the car park.

The 9.29 a.m. train from Flinders Street is due to arrive at Upper Ferntree Gully at 10.34 a.m. Please ring Kath or Pam if you require transport from the station.

KAKADU - KIMBERLEY - RED CENTRE

Why a Guide?

On an extended walk in these areas, even experienced bushwalkers with good map and compass skills will find that using a Walkabouts guide means:

- 1) Your leader knows where to find the best swimming holes, camp sites, waterfalls and Aboriginal art.
- 2) You don't have to worry about organising transport to get to and from the walk. (Hiring a 4WD in Darwin for a week costs about \$1000 + fuel. You pay a \$2000 excess if the vehicle is damaged. Kimberley trips are even more expensive.)
- 3) You don't have to worry about all the red tape involved in getting the necessary permits. (It can take months before some permit applications are finally approved or rejected.)
- 4) You relax each evening while your guide prepares you a delicious three course meal.

Yes, Club Discounts Are Available.

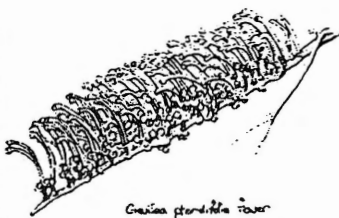
Organise a group of 6 or more and you will all receive a discount of at least 15% on our regular prices. Organise and pay for a larger group at least 3-6 months in advance and the discount gets even higher.

For full details of our program, write

Willis's Walkabouts

12 Carrington Street
 MILLNER NT 0810

Ph: (089) 85 2134 Fax: (089) 85 2355



WEEKEND WALKS - OCTOBER 1992**2-4 OCT92 MT BOGONG SKIING MEDIUM/HARD**

LEADER : GINA HOPKINS
 TRANSPORT : PRIVATE
 EXPECTED RETURN : SUNDAY NIGHT
 MAP REFERENCE : VICMAP LEISURE MAP SERIES, BOGONG NATIONAL PARK 1:50,000
 APPROX DISTANCE : 20 KM

Spring snow, glorious weather, magnificent views! Escape from election madness to the highest place in Victoria.

We'll camp at Mountain Creek on Friday night. Leaving at 8.00 a.m. Saturday, we'll need 4WDs to drive to Camp Creek Gap at the start of the Eskdale Spur which we will climb to the summit. We will spend the afternoon exploring the summit slopes and then make camp in the trees near Cleve Cole Hut. On Sunday we'll have some hootin' and hollerin' around the slopes before descending the Eskdale Spur.

9-11 OCT 92 BEECHWORTH - MT PILOT EASY/MEDIUM

LEADER : ALAN MILLER
 TRANSPORT : PRIVATE
 EXPECTED RETURN : 10.00 P.M.
 MAP REFERENCE : ELDORADO & REIDS CREEK 1:25,000
 APPROX DISTANCE : 34 KM (20 KM WITH PACKS)

Keith White wrote in his track notes that October is an excellent time 'to do this walk as many flowers are at their peak, particularly orchids'.

Friday night will be spent at the Lake Sambell camping and caravan park at Beechworth. The walk will start just east of Eldorado and be mainly along fire tracks on the first day. There will be a side trip without packs to Mt Pilot on Saturday afternoon after setting up camp. Woolshed Falls will be visited on Sunday. Packs will be left in bushes on Sunday for pick up later when we return by car.

I am told that there is an excellent cake shop in Beechworth.

16-18 OCT 92 KANGAROO ISLAND, SOUTH AUSTRALIA EASY/MEDIUM

LEADER : DAVE VINCENT
 TRANSPORT : LIGHT AIRCRAFT - COST \$170 EACH
 EXPECTED RETURN : 9.00 P.M. SUNDAY 18 OCT

This three day walk to Kangaroo Island S.A. includes a full Friday. Access to the island will be by light aircraft from Moorabbin Airport, Melbourne. For a group of six, the estimated cost of the aircraft hire will be \$170 each. The planned itinerary is as follows:

Fri 16 Oct: Depart Moorabbin and fly to Kingscote on Kangaroo Island. Meet tour bus which provides a one day tour of the island's natural attractions (take \$45 to pay for bus which includes all National Park entrance fees). The bus visits Seal Bay (sea lions), Little Sahara, Vivonne Bay, Kelly Hill caves, Cape De Couedic, Admirals Arch and Flinders Chase. The bus will drop us off at Rocky River at about 3.00 p.m. From there we have a 2 hour walk to the base camp site near a waterfall in the Rocky River Gorge.

Sat 17 Oct: Leisurely day walk from the base camp. Expect plenty of swimming in freshwater rockholes and the beaches.

Sun 18 Oct: Explore the Rocky River Gorge in the morning and pack up camp after lunch. Walk back to Rocky River where the bus will meet us again at around 3.00 p.m. and drive us back to the aircraft at Kingscote (included in the \$45 fare already paid). We will land at Goolwa on the mainland to re-fuel. Depart Goolwa for Moorabbin, arriving at about 8.00 p.m. Sunday evening.

For further details and to book a place on this walk, contact David Vincent at home on phone:

16-18 OCT 92 KARA KARA PARK EASY/MEDIUM

LEADER : STEPHEN ROWLANDS
 TRANSPORT : PRIVATE
 EXPECTED RETURN : SUNDAY EVENING
 MAP REFERENCE : ST ARNAUD 1:100,000
 APPROX DISTANCE : 18+ KM

Leaving Saturday morning from Teddington Reservoir via old gold mining areas to Mt Separation (621m). We'll camp that night around Mt Separation, returning back to Teddington Reservoir on the Sunday.

23-25 OCT 92 FEDERATION BASE CAMP: TYERS JUNCTION VARIOUS

ORGANISED BY : WILLOW GROVE BUSHWALKING CLUB
 CONTACT : ED LITTLE
 TRANSPORT : PRIVATE
 EXPECTED RETURN : OPTIONAL
 COST : \$15 PER PERSON (CHILDREN UNDER 16 FREE)

The events of this weekend have been organised by the Willow Grove Bushwalkers (Willow Grove is approximately 14km north west of Moe) and it all happens from "Caringal Scout Camp", Tyers Junction. To get there, from Moe drive north for 32km towards Erica, turn left onto Telbit Rd (3km before Erica) and follow this for 6km to "Caringal" camp. All roads should be suitably marked by our WGBC hosts. Note that arrival in camp is from 4.00 p.m. onwards on Friday. As it is private property it would be inappropriate to turn up any earlier.

The WGBC have put together 21 walks, day and half-day, of varying standards and distance. There will be day walks in Baw Baw / Walhalla areas (driving our cars to the start of the walk) and some walks will leave direct from the camp area. There will also be a planned programme to cater for children and families. Sounds a good laid back "get away from it all" weekend.

Facilities include: kitchen - hot showers - evening activities
 Bring: walking gear, food, stove, tent, wet canteen

31 OCT-3 NOV 92 FLINDERS ISLAND, TASMANIA EASY/MEDIUM

LEADER : DAVE VINCENT
 TRANSPORT : HIRE AIRCRAFT - COST \$100 EACH
 EXPECTED RETURN : 6.00 P.M. TUESDAY 3 NOV

This four day walk to Flinders Island includes the Melbourne Cup holiday. Access to the island will be by light aircraft from Moorabbin Airport, Melbourne. For a group of six, the estimated cost of the aircraft hire will be \$100 each. The planned itinerary is as follows:

Sat 31 Oct: Depart Moorabbin and fly to Lady Barron on the southern tip of Flinders Island. Establish a base camp and do a short day walk.

Sun 1 Nov: Leisurely day walk from the base camp, exploring the unspoilt beaches, secluded coves and swimming in the sparkling blue-green water.

Mon 2 Nov: Depart Lady Barron and fly to Killiecrankie Bay on the northern tip of Flinders Island. Establish a base camp and climb Mt Killiecrankie - a short day walk.

Tues 3 Nov: Day walk exploring the beaches and rock formations around Killiecrankie Bay. Swimming and a leisurely lunch followed by packing up the base camp. Depart for Melbourne mid-afternoon and arrive Moorabbin at about 5.00 p.m.

For further details and to book a place on this walk, contact David Vincent at home on phone:

ALONG THE TRACK**A WEEK IN WILKIE 29 AUG - 5 SEP 1992**

Wilkinson Lodge, nestling in a secluded area of the High Plains some 10 kms beyond Falls Creek, has been a much-valued asset of the Club for many years. However, many Club members, particularly newer ones and Sunday walkers may never have seen or heard much about it. It is used throughout the ski-ing season by groups who stay for a week at a time and here is an account of one such week.

This year Gina and I were not able to ski in with the main party on the Saturday due to other commitments. Instead, we had a leisurely drive up on Saturday, staying at Mt Beauty overnight, then drove up the mountain on Sunday morning. We were at Windy Corner, Falls Creek, quite early, and the day skiers were not yet evident as we shouldered our packs and set off around the Rocky Valley reservoir. There was no sign of the previous day's Hoppet race as heavy snow had obliterated all traces of the course. Visibility was bad as we cut fresh tracks through the thick snow. The trees were groaning under great weights of snow and there was not a soul to be seen for the whole journey. We were soon climbing Basalt Hill where we thought that we heard faint human cries on the wind, but we could see no-one.

It always gives me a thrill to catch my first sight of Wilkie and see the roof just protruding through deep snow drifts. This year was no exception. Steps had been cut down to the door and we were soon feeling at home again. The rest of the party arrived from their morning excursion - GT, Tracy Guest, Max Casley, Trish Elmore, Rosa D'Angelo, Rod Mattingley and Diane McKinley. It was then that they related their adventure which occurred as they were ski-ing around Basalt Hill to examine the new huts that had appeared there. Ski-ing beneath an overhang, there was a sharp retort as the overhang broke away and set off a mass of fast-sliding snow. They were unaware of it until it came swirling around their ankles, legs and waists, knocking them off their skis. Max saw the movement out of the corner of his eye and skied to the side and missed the main flow. Trish became engulfed to her waist and was left standing up, quite unable to move. Others were buried to neck level. The leader, GT, was spared, and on looking around couldn't at first see anyone. Then heads popped up out of the snow and he fell over laughing. It took some time to dig everyone out and no-one was worse for the experience. The stories were recounted over glasses of wine sitting around the fire that evening, the dramatic fervour increasing as the wine disappeared.

The weather took a turn for the worse on Monday - it snowed continually, the wind blew a force eight and we could see nothing. This did not deter the party, who, after all, had gone there to ski, and ski we did. The bad weather continued for most of the week with little let-up, but we were out every day. We visited Faithfulls and MacNamaras Huts on Monday, and circumnavigated Marm Point on Tuesday, a particularly bleak and snowy kind of day. On Wednesday there was some improvement, so we climbed Mt Cope and actually experienced sunshine for a short time but were still denied any views. Snow conditions varied from excellent to gloob, but there was always plenty of it.

Evenings were spent relaxing, eating, drinking and playing cards in the warm, cosy atmosphere of Wilkie. The cooks (everyone in turn) produced wonderful meals - roast beef, roast lamb, lasagne, with a selection of mouth-watering vegetables. Rosa produced wonderful tasty morsels most evenings as we arrived back after ski-ing, and these were much appreciated. The native rats, who are always in residence, made themselves evident at night; it sounded as though they were playing six-a-side football with a tin can and when they got bored with this they chewed at any and everything. They seemed to particularly enjoy Di's goggles and woollen jacket, and made a meal of the oven gloves and plastic top of the peanut butter jar.

Rod had to leave on Thursday and some of us accompanied him back to Falls Creek. We were going on to do some ski-touring at the end of the week and took the opportunity to retrieve our camping gear from the car. Unfortunately the car was buried beneath metres of snow and it took a while to dig out and clear the rear door. Then we discovered that it wasn't our car! The operation was repeated when we found the right car. Gina and I then skied to Johnstons Hut to meet up with Trish, Max, Rosa and Di who were making a morning trip there from Wilkie. We met close by the hut, and whilst Gina and I had lunch the others explored Mt Nelse and Edmundsons Hut. The weather really closed in on the return and we climbed Basalt Hill in a white-out with horizontal snow beating in on us. It was a weird experience coming off the hill as we couldn't tell if we were moving or not and couldn't see where we were going. Max led us safely down to the familiar pole line, and to the shelter of Wallaces Hill.

For the last full day we went to Ryders Yards and enjoyed some wonderful ski-ing as we came down off the side of Mt Cope, through the trees to the

aqueduct. From the huts at Ryders Yards we went to High Plains Creek waterfall where we saw the unusual sight of a brumby stallion in the deep snow. The poor thing was drinking from the creek and having great trouble in moving through the deep snow. We had seen numerous animal tracks, of course, and also saw hares and a fox during the week.

All too soon the week was at an end and it was time to clean up Wilkie ready for the next group. Some of us then skied out to Youngs Spur for a few days to experience yet more snow, more weather and another hut - but that's another story!

Derrick Brown

EATING OUT

Next time that you are travelling to or from the High Plains and feeling hungry, try **Friend's Bistro** at Oxley. Gina and I had dinner there recently. It isn't exactly El Cheapo, but everything is home-made and delicious. My main course was Jabalyana - chicken, prawns and all sorts of goodies with rice and delicate herbs. Gina had rolled pork stuffed with roasted pine nuts and fruit. For pud I had raspberry and apple pie, with home-made ice-cream and cream. The pastry was superb and the filling again lightly spiced. Gina had sticky date pudding. With coffee the whole meal for two came to \$52, which included garlic and herb rolls and fruit juice.

The entrées looked interesting as well, but we didn't indulge. The atmosphere is cosy, with a log fire and red-brick walls. The service is fast and the host, John Friend, is congenial. He offers Bushies a free dessert for a paid one, with a free coffee, if you mention you are from the Melbourne Bushwalkers. He is open until late (Thursday through to Sunday) and will accommodate you at other times if you ring 057 273461.

Friend's Bistro is to be found on your left going towards Hotham, before Milawa, and just after the crossroads where you go right then immediately left.

Derrick Brown

WIN - WIN - WIN

Here's a winning idea - or at least I think so!

You buy the goodies listed below, and make your cheque/money order payable to the Salvation Army

- You get the goodie(s) and a receipt for donation to the Salvation Army to claim on tax.
- I get more space in cupboard and satisfaction of knowing the Salvos get a donation.
- The Salvos get a donation they weren't expecting.

So be quick to purchase:

- Ladies japara (dry wax) jacket, size 10-12
VGC \$45
- Flinders Ranges (external frame) Backpack
As new \$50

Phone Jan Brooksbank

TOOL KIT FOR SALE

Tool box with extensive range of tools including 1/2" socket wrench, 1/2" extension bar, spark plug socket, 10mm to 19mm sockets, plus range of spanners including 10/11mm, 12/13mm, 14/15mm and 16/17mm sizes, two shifting spanners, screw drivers, pliers, etc. All in a neat tool box.

This tool kit was in our van and is now available for purchase by any prospective owner willing to make a reasonable offer.

For enquiries: See Jean Giese or Bill Metzenthin in the clubrooms.

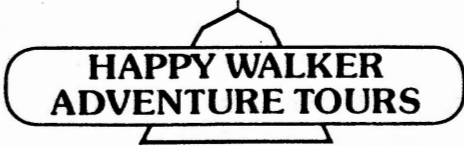
CHANGES OF INFORMATION

Geoff Mattingley

Stephen Down

Geoff Harrison

TASMANIA RED CENTRE VICTORIA NSW FLINDERS RANGES KAKADU



WHAT MAKES OUR TOURS SPECIAL?

★ **Leisurely Walks**

We incorporate leisurely walks from 5 minutes to a full day to really get to the essence of an area.

★ **Two Leaders for 17 People**

This lets us cater for those wanting a gentle stroll and those with extra energy.

★ **Unrushed**

We cover fewer road km but enjoy and absorb each area more, with mostly 2 or more nights in each camp.

★ **Best Time of Year**

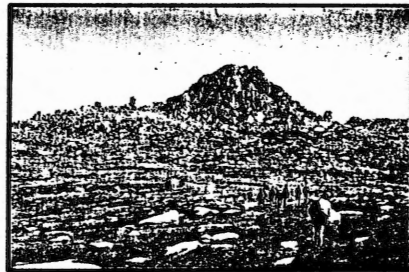
Because we cover such a diverse area, we can programme tours for their best season.

★ **Length of Tour**

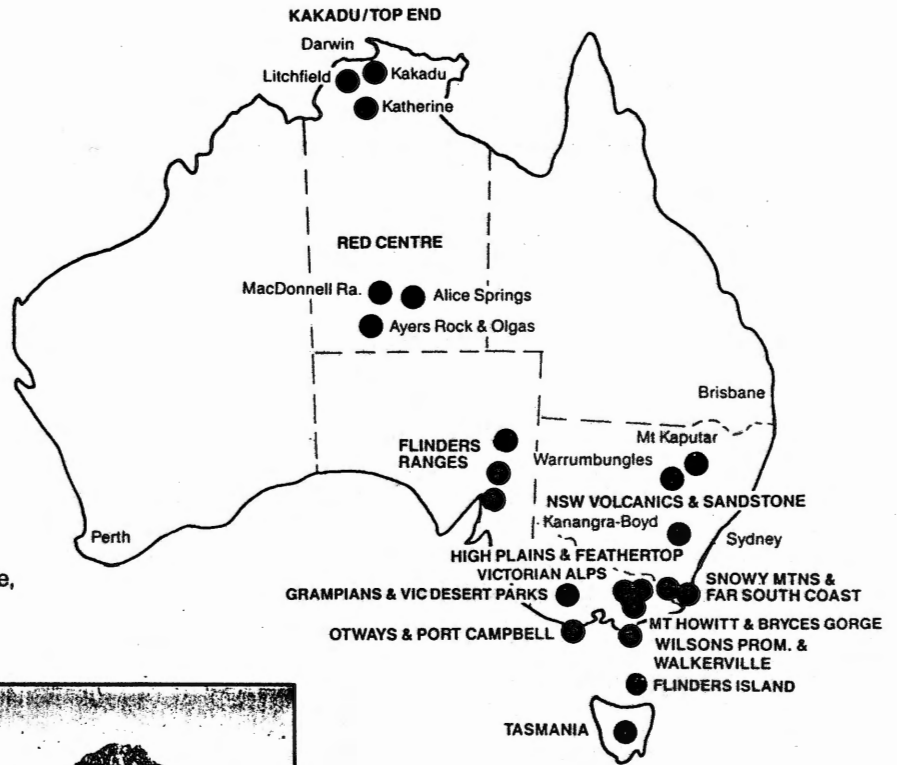
From 4-day Victorian tours to 16-day Red Centre, we cater for all preferences and pockets.

★ **Attention to Camp Comfort**

Essential for a happy group. 2 inch foam mattresses, doonas, your own pillow from home, chairs with backs, large tents with a torch light in each.



★ **Budget Prices**



PROGRAMME

1992	Dec 26-Jan 3	Victorian Alps	9 days
1993	Jan 9-17	Snowy Mtns & Far South Coast	9 days
	22-26	High Plains & Feathertop	5 days
	Feb 6-20	Tasmanian Grand Tour No 1	15 days
	Feb 27-Mar 13	Tasmanian Grand Tour No 2	15 days
	Mar 27-30	Otways & Port Campbell Coast	4 days
	Apr 1-4	Wilson's Prom & Walkerville	4 days
	Mar 27-Apr 4	Above 2 coastal tours	
	May 8-23	Red Centre No 1	14-16 days
	May 29-Jun 12	Kakadu/Top End No 1	15 days
	Jul 24-Aug 7	Kakadu/Top End No 2	15 days
	Aug 14-29	Red Centre No 2	14-16 days
	Sep 18-Oct 1	Flinders Ranges Grand Tour	14 days
	Oct 9-17	Grampians & Vic Desert Parks	9 days
	Oct 28-Nov 7	NSW Volcanics & Sandstone	11 days
	Nov 11-14	Mt Howitt & Bryces Gorge	4 days
	19-24	Flinders Island	6 days
	Dec 26-Jan 3	Snowy Mtns & Far South Coast	9 days

Are you on our mailing list?

If not, why not send for our new brochure or ring us

Name

Address

Send to Happy Walker Adventure Tours
P.O. Box 886, Croydon, Vic. 3136
Ph: (03) 725 2723

COMMITTEE NOTES - 7 SEPTEMBER 1992**CORRESPONDENCE IN:**

John Dupuy - Replacement bus driver
 Murray Peart - Enquiry about MBW
 VNPA - Membership renewal
 Office of the Environment - Invitation to meeting on 7 September
 Historic Buildings Society
 Federation - Caringal Camp

CORRESPONDENCE OUT:

Liz Telford to the Liberal Party (J. Kennett & M. Birrell)
 Alan Clarke to Federation re insurance

BUSINESS ARISING:

Backpack demonstration, to encourage more weekend walkers, to be organized for 14 October.

Wilky 60-year anniversary sub-committee - Jean reported that the anniversary is to be celebrated on 27-28 March 1993. A list of invitees has been prepared and arrangements made for extra accommodation at the Rover Lodge.

No reply yet received from the Corporate Affairs Office with respect to model club rules.

WALKS REPORT FOR JULY:

Total	Day walkers	W/E walkers	Members	Visitors	Fees
215	192	23	169	46	\$2103

Contacts - the Erreys will be away until 3 October.

NEW MEMBERS

Ian Lyel and Ross Stills admitted as new members.

DUTY ROSTER:

Sept	16	Chris & Merilyn
Sept	23	John & Becky
Sept	30	John & Mary
Oct	7	Alan M & Merilyn

NEXT COMMITTEE MEETING: 5 October 1992 at 7.00pm
