

The News

of the

Melbourne Bushwalkers Inc.



APRIL 1999



FEDERATION DAY, STEIGLITZ 1999

BRISBANE RANGES NATIONAL PARK

Federation Day got off to an early start. No chance of sleeping in when the caretaker started up the generator. Just as well – the first walkers began arriving at 7.45am. Breakfasts abandoned, we grabbed the registration sheets to take bookings. With two or three walks leaving every half hour there was a steady turn-around of groups. Some walks required car pooling, so with walkers heading off, cars going back and forth and our bus arriving in the midst of it the place was a hive of activity.

By lunch time all twenty walks were under way, and those left at camp managed a cuppa and a sit down. Looking over the registration sheets, we found we had people from thirty different clubs, including a bus load from Camperdown, several from Echuca, and two from Deniliquin! We calculated there were about 200 people at Steiglitz that day. Soon it was time for afternoon tea. Kettles were put on to boil, tables laid, and display stalls set up. As the groups started arriving back, the hall was buzzing with laughter and reminiscences. T-shirts, books, honey and jam proved popular sale items.

That Federation Day was a great success was entirely due to a hard working group of Melbourne Bushies. Let the credits roll.

Fiona Gallery: chief catering officer, cook and bottle washer and all her kitchen hands
Jan Palich: walk booking/registration officer extraordinaire,
George Zamora: walk booking/registration officer with flair,
Neils Priestly: Mr. Personality parking guide,

Alan Clarke: master name-tag artist and book provider,
Lynda Larkin: book seller and floor sweeper,
Anne Wilkins: T-shirt production and sales,
Joanne Murray: design of superb logo,
Liz Moore: first aid attendance with no-one to attend,
Bob Steel: famous photographer, and
All those who brought goodies for afternoon tea.

Walks leaders: Jopie Bodengraven, Margaret Borden, Max Casley, Julie Cassar, Alan Clarke, Bill Donald, Jenny Flood, Sylvia Ford, Jean Giese, Peter Gipps, Gina Hopkins, Jerry Karbownik, Stuart Mann, Geoff Mattingley, Alan Miller, Rod Novak, Darryl Weinert, and last but certainly not least Phil Dickson and Colin Smithyman, who have both lived in Steiglitz for more than twenty years.

To all those who participated, an enormously big thankyou from

Ye Olde Organising Committee (Pearson, Max and Jean)

Congratulations and Thanks Jean

I think everyone would join with me in thanking Jean Woodger for the incredible amount of time, energy, organisation and just plain hard work she put into ensuring that Federation Day was a resounding success. The venue was great, the walks varied and interesting and the local leaders that Jean recruited were "gems". In other words it all ran like clockwork and was a great day.

Editor

From the President

We've had our first meeting of the new Committee and we've allocated jobs. We also decided to spend some money on software so that the News Editor could produce this newsletter (to date we've got by using other people's software). The Federation Day that we were hosting took place at Steiglitz Camp and this went very well indeed. We had a large number of helpers (and walkers) present and I thought that the organisation was just *terrific!* Our thanks are due to Jean Woodger and her committee and helpers.

Our first social event - a barbecue at Fairfield boathouse - proved to be a delightful evening and we all enjoyed the special kayak capsizing demonstration. Thank you Brian and Fiona. I ended up with a rather nice plate that I didn't take - would anyone like to claim it?

Next year, apart from being rather special in that it is year 2000, is also our 60th anniversary. It really doesn't seem so long ago that we had the fiftieth birthday celebrations, does it? It has been put about that we should be doing something to celebrate 60 years as well as the new millenium. If you have any thoughts on the matter please let me or one of the Committee know. If not, start thinking...and we'll need someone to organise whatever we decide upon so a volunteer (or two) is needed.

Derrick Brown

From the Editor

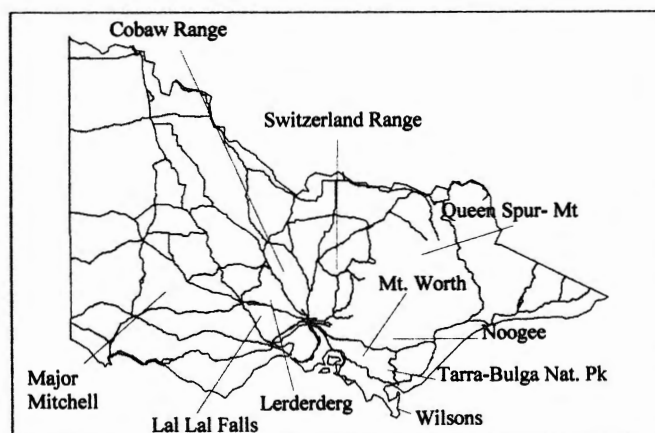
Thanks for the encouraging comments and suggestions on my first edition of **The News**. I have received a great response from everyone and have lots of articles, some walk previews and what I think will be a very informative, novel and fun 'Feature' each month on how to read maps.

Although I am quite happy to receive material in writing it is terrific when it arrives already formatted on disk or by E-mail.

I would also like to receive from members snippets of amusing things that happen on walks, outings, social events, etc. They make great fillers for that bit of the column that nothing else will fit in'

Clare Lonergan

P.S. I am intrigued at the number of new ways people have found to spell my Christian name!!



The News is the official newsletter of the Melbourne Bushwalkers Inc. and is published monthly.
Edited by **Clare Lonergan**.

Articles, walk reports, poems, snippets of news, photographs of club events, reports of new gear, book reviews, letters "to the Editor", advertisements, etc. are always welcome. The Editor reserves the right to edit articles, letters or other contributions, where space, clarity or propriety dictate, and to maintain editorial consistency.

Please note that articles for **The News** may be sent to Clare Lonergan by:

- ◆ Placing article (on disk if possible) in the Red Box in the clubrooms
- ◆ Mailing to:
- ◆ Fax:
- ◆ E-mail:

Advertising Rates:

¼ Page 1 Issue - \$20; 3 Issues - \$50; 12 Issues (1Year) \$180
½ Page 1 Issue - \$30; 3 Issues - \$75; 12 Issues (1 year) \$270
Full Page 1 Issue - \$50; 3 Issues - \$125; 12 Issues (1year) \$450
Only advertisements directly relating to bushwalking will be accepted (e.g. gear, maps, trips, tours, etc);

Members Ads - FREE

Closing date for **May News** is 28 April, 1999

Meetings are held in the Clubrooms, MacKenzie Street, Melbourne (rear of the Royal Horticultural Society Building) on **WEDNESDAY** evenings between 7.00pm and 9.00pm

Visitors are always Welcome!!



General correspondence should be directed to:
The Secretary, Melbourne Bushwalkers Inc.
PO Box 1751Q, Melbourne, 3001

Social Scene

Bushies Friday Night Jazz



7pm at the Bridge Hotel,
Richmond.

Friday 30 April from 7pm
Come along for a fun night
of fine food and good
company
Listen or dance to some Hot
Jazz and let the fabulous
singer Pippa Wilson "swing
your Blues Away"

Limited numbers so
bookings are essential with
Brian Crouch on 07556 1111
before Wednesday 28th
April.



Slide Presentation

by
Les Southwell

8pm Wednesday 12 May
in The Clubrooms.

Les, who has published at
least one book of
photographs of Lake Pedda,
has taken some superb
colour slides over the years.
This will be one
presentation that should not
be missed!!

Nibbles are provided

YHA Bushdance

8.30pm Friday 28 May at
Kensington Town Hall

Let's get a few tables
together at the YHA
Bushdance at the
Kensington Town Hall on
day the
Cost \$12 per person. BYO
drinks and supper.

Families are welcome.

Call Fiona to book a
place.

Phone:



Day Walks for April and May, 1999

11 April	Captain Creek - Wombelano Falls
-----------------	--

E/Medium & Medium	
------------------------------	--

Leaders	Jan Palich and Peter McGrath
----------------	---

Transport	Bus from Southbank Boulevard at 9 am
------------------	---

Expected time of return	7.00 pm
------------------------------------	----------------

Map reference	Kinglake National Park Outdoor Leisure Map
----------------------	---

Area	Kinglake
-------------	-----------------

Approximate length of walks	17 & 19 km
--	-----------------------

This is a lovely part of Melbourne. Kinglake National Park is one of the best forests close to Melbourne. Water features add interest to an otherwise scenic area. The walk offers temperate rain forest and excellent views.

Both walks will visit Wombelano Falls and Captain Creek. At Wombelano Falls there is a viewing platform which we will visit after a descent through some

lovely forest. The Medium walk will travel a little further along Captain Creek Road which will differentiate this walk from the Easy/Medium.

You will enjoy this day in the forest.

Sat 17 April	Dandenongs Explorer
---------------------	----------------------------

Easy	
-------------	--

Leader(s)	Helene Hunt
------------------	--------------------

Transport	Private
------------------	----------------

Expected time of return	4pm at the carpark
------------------------------------	---------------------------

Map reference	Melways 119 B11
----------------------	------------------------

Area	Wandin/Seville
-------------	-----------------------

Approximate length of walk(s)	14.5 km
--	----------------

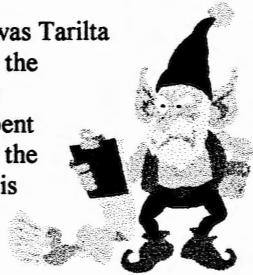
We will start the walk at 11am from the car park in Union Road, Wandin. Most of the walk will be on the Warburton Trail, however, we cross a slight hill and go into Seville where we will stop for lunch and then continue through

lovely bushland and back to the Warburton Trail. We should return to the starting point by 3.45 pm. I will book a table for afternoon tea at the beautiful historic homestead Mont Delancey.

Please assemble at 10.45 am. Please join me on this walk. I'm quite sure that you will have an enjoyable day. Unfortunately there is no train service near this locality, however if you have a problem with transport, please ring me at home () after hours and maybe I can organise a lift.

Sun 25 April	Hepburn Springs -Mt. Franklin
Easy & Medium	
Leader(s)	Alan Miller & Darryl Weinert
Transport	Bus from Southbank Boulevard at 9 am
Expected time of return	6.30pm
Map reference	Guildford & Daylesford 1:25 000
Area	North of Hepburn Springs
Approximate length of walk(s)	13 & 18 km

Our big discovery on the preview was Tarilta Gorge. When this walk was last on the programme (May 1996), the leader recommended that more time be spent here. We agree. We will only walk the southern end of the gorge, but that is quite impressive and alive with kangaroos who appreciate its wide grassy areas alongside the creek. N.B. Tyrone Thomas calls it Mt. Franklin Gorge in his book on walks in Victoria's Gold Fields.



After Tarilta Gorge, we climb Mt. Franklin, which is an extinct volcano. The easy group will then take the bus for a few kilometres down towards Hepburn Springs where we will explore Widows gully, Womans gully and Jacksons Lookout, before ending the walk at the kiosk at Hepburn Springs.

Sat 1 May	May Day Walk - Mt. Koala Ridge
Medium	
Leader(s)	Leader Required
Transport	Private
Approximate length of walk	
Expected time of return	
Map reference	

Please check in the Club Rooms for further details of this walk.

Sun 2 May	Noojee Area
E/Med & Medium	
Leader(s)	Sue Ralston & Fiona Gallery
Transport	Bus from Southbank Boulevard at 9 am
Area	Tarago Latrobe State Forest
Approximate length of walk	12-15 & 18 km
Expected time of return	7.30pm
Map reference	Neerim 1:25 000

These walks are in beautiful mountain ash and messmate forest, with extensive fern gullies and valleys, and some lovely ridgetop views.

There will be some gentle to moderate climbing (a little more for the medium group) and steepish descents. Both walks will be on tracks.

Both walks will end near the Tarago Reservoir, which will be explored by the medium group, and which will provide an optional extended walk for the easy-medium group.

Sun 9 May	Switzerland Range
E/Med & Medium	0830 START
Leader(s)	John Kittson & Stuart Mann
Transport	Bus from Southbank Boulevard at 8.30 am
Approximate length of walk	15 & 17 km
Approx distance from Melb	110 km
Expected time of return	7pm
Map reference	Dropmore, Yarck, Molesworth, Yea = Scale: 1: 25 000
Area	Yea - Molesworth

Our flight path will take us north along the Hume Freeway then head east at Tallarook onto "Switzerland". Sounds wonderful, doesn't it? But no, I'm referring to the Switzerland Ranges near Yea.

For a good down to earth bush walk, the closest thing to flying will be the magnificent views we will have during the day, with our main lookout point being from Mt. Broughton (alt. 655, at GR. 589903 "Dropmore Map"). There are waterfalls to be seen and maybe wedge tail eagles, a few undulations, but all in all a good day's walk (trust me!!!).

May I suggest you bring that spare change of clothing and a thermos to leave on the bus for the end of the day, just in case it rains and turns cold. Bring fresh water for drinking on the walk as it won't be available during the day, and have your coat, beanie and gloves with you as it is exposed in this area and can get quite cold.

PLEASE NOTE!!!
The Winter Walks Program will be enclosed in the May Edition of The News

Sun 16 May	Mt.Worth
Easy & E/Medium	
Leader(s)	Peter Havlicek & Margo MacNamara
Transport	Bus from Southbank Boulevard at 9am
Approximate length of walks	14 & 17 km
Area	South of Warragul
Approx distance from Melbourne	125 km
Expected time of return	7pm
Map reference	Mt Worth 8021-2-1 & Alembec 8121-3-4 (1:25000)

Mt Worth is an ancient volcanic upthrust. The area was logged in the 1920-40's with regrowth occurring from understorey plants and some planting by the Warragul Field Naturalists Club (Mountain Ash, Silver Wattle, Blackwood, Manna Gum, Messmate, etc). The State Park supports numerous animals and birds.

The easy walk includes an initial steepish climb of 120 m, but the rest along Divide Track and Moonlight Creek Track is easy. A giant Mountain Ash is a feature near the lunch spot. The easy/medium has little more climbing, just the extra kms, folks! The walk is a circuit.

Wed 19 May	Lerderderg East Walk
E/Medium	
Leader(s)	Sandra Mutimer
Transport	Private
Approximate length of walk	14km
Expected time of return	6pm
Map reference	Cons. Forests & Lands, Lerderderg Gorge Forest Park 1=25 000

(Unfortunately the above map is now out of print)

Meet at 9 am at Westgate Park car park (Melway reference 56 F1) or O'Briens Crossing Picnic Ground at 10.15am. Please confirm arrangements with me if planning the latter ().

The walk starts at O'Briens Crossing on the northern bank of the Lerderderg River, follows it downstream on the East Walk Track and then joins the Cowan Track at the junction of the Lerderderg River and Cowan Creek. The Short Cut Track will return us to O'Briens Crossing Picnic Ground.

I am sure the weather will be good and we'll have an enjoyable walk in this area of the Lerderderg Gorge National Park, however.....there is a very slight possibility we may need to have a change of plans if it has been raining heavily.

Sat 22 May	Navigation Day
Easy	
Leader(s)	Alan Clarke
Transport	Private
Approximate length of walk	14km

This should be a great day. Please see leader in Club Rooms or telephone him () for more information.

Sat 22 May	Dandenongs Explorer
Easy	
Leader(s)	Michael Humphrey
Transport	Private
Map reference	

This is an easy walk in a lovely area. Phone the leader for further details () or talk to him in the Club Rooms.

Sun 23 May	Cobaw Ranges
E/Med & Medium	
Leader(s)	John Kittson & Bill Donald
Transport	Bus from Southbank Boulevard at 9 am
Approximate length of walk	13 & 15 km
Area	West of Lancefield
Approx distance from Melb	90 km
Expected time of return	7pm
Map reference	Theaden Hill, Romsey, Taylor Hill, Woodend Scale 1:25 000

We will head out along the Hume Highway and the Northern Highway via Kilmore and Lancefield. Our walk through the Cobaw State Forest is a mixture of gravel roads, bush tracks and off track walking. We will take in granite outcrops, the local fauna and flora of which you may see wallabies, echidnas, heaps of bird life and all this under a lovely canopy of all type of eucalypts – sounds nice? Let's hope for a good day, but being late autumn, we could get a spot of rain, so bring that change of clothing along with a thermos and leave it on the bus just in case. You will need to carry a supply of drinking water with you as there will be none available through the walking area.

On Federation Day one of our leaders noticed a rather horrible smell when he and his group stopped for lunch. Although he had showered that morning he thought that the humid weather had caused him to 'glow' and he quickly checked his socks, armpits and soles of his boots. As these really didn't seem any worse than usual he was totally puzzled at the smell. His relief was immeasurable when one of the group emerged from a toilet stop in the bush to declare with disgust that there was a dead fox rotting in the bush!
Nice aftershave Max!

Sun 30 May
Easy & E/Medium

Lal Lal Falls - Mt. Doran

Leader(s)
Transport

Brian Crouch
Bus from Southbank
Boulevard

Area
Map reference

SE of Ballarat
Lal Lal 1:25 000

This is a lightly timbered area along the Moorabool River. This is an old iron mining area. We will be visiting a historic blast furnace during the first part of the walk. A detailed review will be included in the next edition of News.

Murray River Trip - Labour Day Weekend (5 - 8 March, 1999)

Friday night in Echuca was balmy and relaxed - star gazing was on the agenda.

Though we arrived promptly at canoe hire headquarters the next day, we found that the proprietor did not have sufficient barrels for the whole group. We suspect that they had already been given away to another group. This became of significance within the hour when the last canoe, carrying Helen and Odelia, fell foul of a paddle steamer, and canoe and contents were chewed and then spewed into the river. Not only was it fortunate that no physical injuries were sustained but Doug and Jan were also on hand to lend assistance. Doug managed to recover most of the contents and return the damaged canoe to base, and exchange it for another. The rest of the party waited downstream - some not so patiently - while this drama was being played out, and were mightily relieved to learn that the outcome was a happy one. David, having realised that it was his stuff that was in the drowned canoe, was delighted to discover that his food, especially his dinner for that night, had been saved!

The morning's delay meant that most of the day's distance had to be covered in the afternoon. Despite the feeling that the venue for the Grand Prix had been moved to the Murray as we were deafened, splashed and swamped by speed boats and water skiers, we doggedly paddled on till George and Doug pronounced a suitable camp site.

Our intrepid leader was subject to much mirth: when a water skier had the effrontery to comment on George's pyjamas, as though George was eccentric! Some unkind members of the padding party suggested the pyjamas were George's sole memento from his life in Spain!

The rest of the trip was relatively uneventful. A few showers on Saturday night; fewer water skiers and boats on each successive day; fewer clouds and a brilliantly sunny, glad-to-be-alive day on Monday; increasingly dense, green bushland; and birds, the occasional duck and the crazy, stunning, white, sulphur-crested cockatoos against the blue sky.

The younger members of the party who had begun the trip naive about the mysteries of paddling developed such skill, and muscles no doubt, that they were well ahead of the older members, especially George and me, by the last day.

I think we were all rather impressed with ourselves when we realised we had paddled 80 or so kilometers in three days, in the face of a number of difficulties, not the least of which was the sluggish nature of the current. Frayed tempers were averted when we found we were all able to pile on the bus and return in one group to the canoe hire headquarters.

Thanks George and Doug, and the rest of the party: Jan, David, Helen, Liz, Rod, Anabel, Gina, Alan, Janty, Jane, Andrew, Vanessa, Adrian, Chris, Odelia, Eveline and Treena.

Maureen Peck



A night at "Bogong" shop in the City

Thursday 29 April commencing at
6.30 pm

Programme (not in this order)

Speaker - they have a very inspirational bushwalker (walking and overcoming amazing odds) Bogong person showing how to "pack a pack"

Refreshments

Browsing the shop

15% discount on all goods - with an extra percent off specialised goods (this will be decided on the night).

Attending: Yes - please let Jan Palich know so that catering can be arranged.

I have chosen this night as all the winter stock should be in and it is early enough for people to get any camping equipment, tents, thermals etc, and also for those who want to purchase winter skis/boots, etc.

Please come and browse - even if it is for a small candle lantern - 15% is better than our normal 10% off at these outlets!!



T Shirts

Federation Day, Steiglitz '99
Just a few T-shirts left. Don't be disappointed!
Only \$10
From the Clubrooms

Weekend Walks for May

30 Apr – 2 May **Wilsons Prom**
Easy

Leaders **Deb Henry**
Transport **Private**
Map reference **150 000 Out Door Leisure**
Map

We will start at Oberon Car Park and head down to Roaring Meg. We will make camp here and spend the rest of the day exploring the South Point. On Sunday we will make our way to Tidal River via Oberon Bay. This walk is suitable for beginners and experienced weekend walkers.

7-9 May **Major Mitchell Plateau**
E/Medium **(Grampians)**

Leader **Ralph Blake**
Transport **Private**
Map reference

Please see leader in Club Rooms for more information about this walk or telephone him on

14-16 May **Tarra-Bulga National Park (Base**
Easy **Camp)**

Leader **Darryl Weinert**
Transport **Private**
Area **South East Gippsland**

This is an easy base camp for all you Sunday walkers who need to really get away. Well only about 130km into the South East Gippsland, just south of Traralgon, tucked away in the valleys of the Strzelecki Ranges. Yes, it is there that you'll find extremely beautiful cool climate rain forests, of the type that were around before the white sails appeared on the horizon. From the 1870s, settlers cleared the land for dairy farming purposes in the western Strzelecki Ranges, leaving only a few scattered areas of forest. The rugged and steeper slopes of the eastern Strzelecki Ranges were opened for selection in the 1890s and settlers' cottages soon dotted the ridges. Due to the harsh conditions and the rugged nature of the land, many farms were abandoned or became neglected.

The quality of the fern gullies led Alberton Shire Council, in 1903, to reserve small areas of forest near Balook, and in the Tarra Valley in 1909. The former was named Bulga, an Aboriginal word meaning mountain, while the latter was named after Charlie Tarra, an Aboriginal who guided Strzelecki and his party through Gippsland in 1840.

The walk should be great but don't come looking for a marathon walk because the park is not that big, and we don't want to do it all in one day. We will be basing ourselves at a nearby caravan park, Tarra Valley, so you can enjoy the facilities. It will also be necessary for us to

drive to and between various walks through the forests. Watch the News for more details or talk to me, Darryl, when you see me.

21-23 May **King Spur - Queen Spur**
Medium

Leader **Bill Metzthen**
Transport **Private**
Map reference **Howitt - Selwyn 1:50k**
Distance **About 17 km**
Limit: **12**

The King Spur - Mt Speculation - Mt Buggery - Queen Spur circuit has become a bushwalking classic. The trip is a complete circuit, starting and ending at the King River. Depending upon the party, we might try a variation from the usual route.

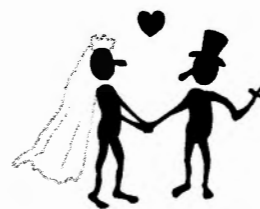
There are one or two places where minor scrambling is required so the trip might not suit walkers who are unhappy on rock.

The walk is in some of the best bushwalking country in the state, although unfortunately some of the lower areas are subject to logging.

28-30 May **Kara Kara State Park**
Easy **(Base Camp)**

Leader **Leader required**
Transport **Private**

Further information with respect to this walk will be available in the Club Rooms or alternatively phone Pearson Cresswell on for more information.



A little bird has told me that Patricia Ronchini and Chris Cheah were married on 5th March, 1999.

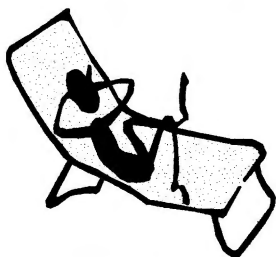
I am sure all members would like to extend their congratulations and wish them all the best for their future life together

Editor

Mt. Buffalo Base Camp

(19-21 February 1999)

Fifteen Bushies enjoyed beautiful blue skies on the recent base camp at the Lake Catani campsite. This is a great place for car-based overnight camps with a 'group campsite' complete with tables and fireplaces, nearby hot showers and a lake for that refreshing swim. On Saturday we went for a pleasant stroll out to Mt. McLeod. On the summit we enjoyed lunch with great views of the picturesque Ovens Valley and the distant peaks of the Victorian Alps. The Buffalo plateau provided panoramic views back to the Hump, the Cathedral and the Horn. There were hang-gliders circling on the thermals like giant eagles. Marilyn then led an optional extra 4kms to Mt. Dunn.



The lazy ones retreated back to camp for a swim, afternoon nap and a good book. Meg, Linda, Alan, Bill and Wendy climbed the Horn to watch a classic sunset. To celebrate 'another day in paradise' and a beautiful sunset, we all shared finger food over a glass of wine or two.

On the table was a veritable smorgasbord of Turkish bread, lots of dips, stuffed vine leaves, smoked mussels and oysters, olives, exotic cheeses, freshly picked grapes and other delicious treats. It was a great night for star gazing, toasting marshmallows and yarning around a cheerful fire. On Sunday, we walked around the lake, up to the chalet and the lookouts, then down the 'Big Walk'. After a quick dip we drove back to Melbourne via the usual food stop at the Jolly Jumbuck in Euroa.

Party: Rod, Liz M, Bob, Marianne, Marilyn, Christine, Liz T, Michelle, Jenny, Kathryn, Wendy, Bill, Alan, Linda & Meg.

Rod Novak

From the Assistant Walks Secretary**Thank You Farmers**

From time to time, we need to ask farmers for permission to cross their land. Most readily give permission, and some go out of their way to help us. For the walk on Sunday 18 April to Warragul Rocks, Mr. Ian Ridd has given permission for us to cross his land. Mr. Ridd operates 4WD tours in the Trawool Valley. His brochures are on display in the clubroom.

Sunday Walks

As we now have a new bus with carpet please don't forget to bring a change of clothing and dry shoes to change into when you return to the bus after those potentially cold, wet and muddy Sunday walks. A thermos with a hot drink and something to munch on does not go astray either.

Alan Miller

From the Membership Secretary**New members:**

BAIN MUNRO ATTWOOD

LYNNE BOURKE-FINN

KAREN LEHRKE

GUDRUN SCHELL

Altered Address/Phone:
JULIE CASSAR

PETER DAY

MARK FRASER

JERRY GRANDAGE

BOB STEEL

To all those "Seraphic Thous" who have paid their subscription, may you float effortlessly 25.4 mm above the roughest of bush tracks, including those angling 45 degrees to the horizontal. The rest of you, stem the growth of those fiendish horns on your forehead, prevent the lengthening of that forked tail and send in your subscription in today!!!

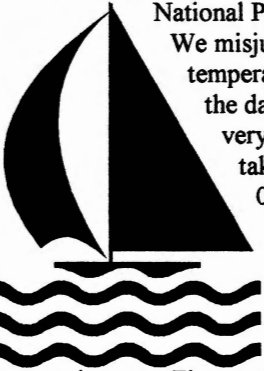
The statistics: of the 476 persons due to pay, I have received money from 121 = 25.4% - so there!

Life Members	11
Honorary Members	9
Single memberships	382
Family memberships	94 (= 2x 47)
Total membership	496

Peter Havlicek

On board 'Myvanywy' (22 February 1999)

When we left Darwin in July 1998 in our sailing boat 'Myvanwy' our aim was to visit some of SE Asia's National Parks and do a little bushwalking. We misjudged the climate though. The temperature was between 30-33°C during the day and 28-30°C at night. With a very high humidity all walking had to take place between 0600 (dawn) and 0900.



Two of the many highlights of Indonesia were seeing the Komodo dragons and the orang-utans on Borneo. We sailed to Rinca Island in the Komodo group between Flores and Sumbawa dropping our anchor in the sheltered bay near the national park centre. We made a quick trip ashore in the dingy to arrange to go walking at dawn with the 'old man ranger' (40 years old!)

No-one is allowed to walk in the park without a guide as legend has it that the dragons can bring down a horse and eat it! We were a bit sceptical, after all they are just big goannas, aren't they? Our walk, which started before sunrise, was great. The island is just like a park with wild horses, buffalo, deer, monkeys, and of course dragons. At first sighting the dragon looked like a fallen log as it lay there waiting for a passing feed. The second and third sightings just confirmed that they were really very big goannas. The biggest we saw (3-4 metres long and over 100kg) was guarding our dinghy when we returned to it and had to be shooed away. A great walk with lots of interest and excitement.

Several weeks later we sailed into Kumai on the south coast of Borneo where we anchored in the river opposite the port, in itself an interesting place. Here it took two days to organise permits from the police and NP headquarters to visit Tnatjung Puting NP. With permits in hand we were off, with great excitement. We travelled up a tributary of the river to a little jetty at the edge of the jungle. Met by a NP ranger we were taken along a jungle track for 3-4 km to a clearing where we sat on a log expectantly. After several yells by the ranger the orang-utans appeared from the trees and came down to sit beside us. They seemed as interested in us as we were in them. Many were orphans as a result of the activities of logging operations or poachers and were being fed extra fruit and milk supplements until they could fend for themselves.

We had lots of experiences, some hilarious, both here and at other sites in this jungle park and the memories will remain with us forever. We were very reluctant to leave but our two month visa for Indonesia was about to expire and we had Singapore, Malaysia and Thailand to see.

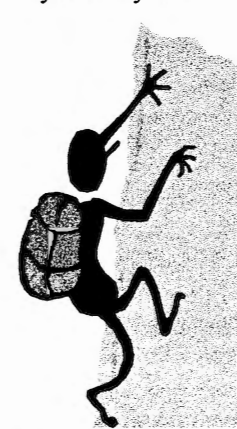
Graham and Marijke Mascas

Bryce's Gorge with Nostradamus (6-8 March, 1999)

The dreaded affliction hydro-aqualalis-amore has reared its ugly tentacles yet again. Not content with trips to the Snowy River, Moroka Gorge and the Thompson River, four afflictees and one unsuspecting newcomer victim felt the unstoppable urge when they spotted Jerry's trip on the autumn programme. A three day medium hard trip following the rarely traversed section of Conglomerate Creek downstream of Conglomerate Falls at Bryces Gorge sounded like just the thing to assuage the HAA urges.

Day 1 was pleasant and easy, a bit of up and down on an overgrown vehicle track from Dimmick's Lookout and some light scrub out along the Mt Darling Range, followed by a steep knee stressing 860 m off track descent to Conglomerate Creek. Camping here was great with plenty of flat ground. The creek was a bit afflicted by aqueous minimus which made the rest of the trip much easier than Jerry had anticipated.

We got to camp very early next afternoon due to the low water level making the rockhopping much easier than anticipated. Campsites along the creek looked to be non-existent but Jerry's unfailing memory of a previous VMTC trip took us straight to the spot enclosed by rocks and vegetation in a difficult spot not visible from the river. Upstream was a series of delightful crystal clear pools and small waterfalls, a lovely backdrop for dinner. Nostradamus had predicted the existence of the campsites but using his writings we failed to find them so we had to rely on Jerry alone!



Day 3 was the best part of the walk with lots of cascades interspersed with boulder hopping. There were three major waterfalls, the last of which was the main Conglomerate Falls where the creek first plunges into its gorge. The highlight was the middle fall; a beautiful drop into a narrow cool green chasm. It presented a major obstacle due to cliffs on either side. Nostradamus predicted a way through the cliff on the left side but blew if we could find it. We

found only a vertical cliff and some ripe native raspberries. In the end we just went up the obvious ramp which took us relatively painlessly to the top of the cliff. From the top of the falls I could see 30 metres back from the fall meant a spot that at first glance looked impossible!

Lunch was at the top of the main Conglomerate Falls and we had the rest of the day for a leisurely walk out along the clifftops and past Pieman Falls Lookout back to the car.

A fine exploratory walk which was heaps of fun and well suited to waterfall freaks suffering from the dreaded HAA

Oh incidentally, Nostradamus was a set of tracknotes from a back copy of Wild Magazine.

Jopie Bodegraven

Baw Baw Plateau – Snow & Fallen Trees*(27-28 March 1999)*

Four of us that met at Mt. St. Gwinear Car Park on Saturday morning, the weekend before Easter. Having two cars would enable us to do a through walk from Stronachs Camp to Mt. St. Gwinear.

We all got into my car and headed off to Stronachs Camp. At one point a huge old tree had fallen across the road. After clearing the debris we were able to drive under the massive trunk with several inches to spare by hugging the embankment.

It was a lovely walk along a grassy track, overgrown in parts, leading from the alpine ash forest (much sought after by the timber industry) up into the snow gums. At one point we had good views to the north-west, presumably around Mt. Donna Buang. The weather was cool, overcast but fine. The walk, graded easy, was about 11 km steadily climbing 280 m to a campsite at 1410 metres elevation. We camped by the ruin of a hut built early this century by the government to encourage walking on the route from Warburton to Walhalla. Only the concrete fireplace and slab floor remain. The sheltered site was well chosen, with clear water in the nearby creek.

We had nearly finished our dinner when heavy rain started, driving us to our tents. It continued raining, turning to snow towards morning. During the night strong winds could be heard in the tree tops but our tents barely moved.

We awoke to find several inches of snow had fallen with our tents sagging under the load. As the weather did not improve it was decided to retrace our steps to Stronachs Camp. The snow had made the track difficult to follow and deeper snow could be expected higher up possibly with more fallen trees on the road. As the day wore on we were glad of this decision. It continued snowing, sleeting and raining, with occasional fine breaks. However it was quite beautiful walking among the snow covered trees and bushes. At one stage we were following the tracks of a large dog and then saw a German shepherd running away from us.

Snow had fallen to below 1200m, almost down to Stronachs Camp. Driving to Mt. St. Gwinear was very slow due to fallen trees. Most of them we could move or drive around until we came to a big tree where we could do neither. We spent about an hour building wooden ramps on either side of this tree (as long as the wheel base - nearly 3 metres). One kilometer after this we were completely stopped by a tree too big to move or drive over or around. But then our luck changed! A few minutes later two logging contactors drove from the other direction. Their chain saw made short work of clearing the tree. In fact that was as far as they intended to drive as their logging coop was adjacent. However, when they heard about our ramp and the other tree they drove off to deal with that. When we arrived at Mt. St. Gwinear it was snowing heavily.

The walking was good, the weather was interesting and the driving was hard work! The group was Bob Oxlade, Lance Mobbs, Cameron McMillan and me, Max Casley.

Obituaries

Many Club members will remember **Peter Ashby** as a very strong, competitive walker of the seventies and eighties. When I joined the Club in the late eighties he was a regular weekend walker, always out in front, one of the 'greyhounds' of the time. He was an able navigator, which was just as well, for on more than one occasion he became separated from the party and he was be-nighted by himself once near Tali Karng, walking into camp the next morning looking a little forlorn. He kept very fit. On a 'Prom in a day' walk, not content with walking the usual 40 + kilometres, he walked to the lighthouse and back as well. Peter was a keen rogainer but had trouble finding a partner who could keep up with him.

Peter had a dry sense of humour and would often tease people. This got him into trouble on a few occasions. After one incident he rang the leader of the walk to humbly ask permission to go on her next walk, promising to 'be good'. He was.

With his wife, Cynthia, he went to Tasmania in February 1979 to walk the infamous Western Arthurs range. They had dreadful weather and at one point were forced to stay in their tent for three days. He almost lost his pack when it was blown over a cliff and fell 250 metres. Peter climbed the cliff and retrieved it. They and all of their gear, including sleeping bags became soaked. On their way out Peter cut a hole in the bottom of his pack to let out litres of water which were weighing him down. He was cold and wet for so long that he suffered from 'trench foot'. It took six months for him to recover fully. Their story appears in the 1982 edition of *Walk*.

Peter had been an engineer until he took early retirement. He then walked with the Club at every opportunity. He was a great talker around the camp fire and he and I were often the last two to leave, putting out the fire and saying our goodnights. He was a Club member from 1973 to 1995.

Peter died in February from lung cancer. I'm sure that many Bushies will remember Peter with affection and will wish to offer their sympathies to Cynthia.

Henry Cymbalist

It was only last July when Henry and Suzy Cymbalist presented their wedding sugar bowl back to the Club, at the occasion of the 100,000th walker party for the veterans. (A sugar bowl was presented to couples who met through the Club and subsequently married. Henry and Suzy married on 22 December 1949.) Henry passed away recently.

Derrick Brown

Conservation Forum

Conservation Campaigns

At the March Committee meeting, Deb. Henry and Rod Novak have volunteered to help Graeme Thornton promote conservation issues that effect our bushwalking areas. We will keep members informed of the current Conservation Campaigns via The News and the Conservation noticeboard in the clubrooms. Feel free to have a chat with us for more information or help/advice on making a contribution. Be informed and be active.

Did you know ... that The Bushies subscribe to the Australian Conservation Foundation's magazine called Habitat. The current issue is pinned to the CONSERVATION NOTICEBOARD. We also receive Park Watch - the quarterly magazine of the Victorian National Parks Association. This current issue is pinned to the CONSERVATION NOTICEBOARD. Have a coffee and check out these great mags. next time you are in the clubrooms.

Current issues with the Victorian National Parks Association include their new home page at <http://www.vicnet.net.au/~vnpa/> and the challenges ahead for native title, parks under threat from commercial development, equal representation from under-protected areas such as Box-Ironbark forests and the marine environment. There is a very interesting centre-spread on the community support for the Wilson's Prom. and Mt. McKay campaigns.

Current issues with the Australian Conservation Foundation include land clearing, Jabiluka and the Hands Off Royal Park! campaign.

Note: The Minister for Planning and Local Government - Mr Maclellan - has decided against an Environmental Effects Statement for Mt McKay. We need you to write a letter asking for a thorough planning process and consideration of all the issues with the same degree of examination and rigour as with the Mt Stirling consultative process.

Deb Henry, Rod Novak & Graeme Thornton

A few short snippets this month.

Elsewhere in this issue you will find a request from the VNPA for help on the excision from the Alpine national Park and subsequent development of Mt McKay. Stephen Lake covered this in last month's NEWS. The model for the VNPA photo was a female mountain pygmy possum keen to be off after having been caught during the recent (Dec '98) survey at Mt McKay. You can see she's wearing her earring-tag.

Also in this issue is a plea from The Wilderness Society for help with the planned logging of the Wongungarra. I remember wading down the Wongungarra in Rod Mattingley's wake some years ago so I, like many Club members, have fond memories of the unspoilt beauty and tranquillity of the Wongungarra. It is

a very special river valley, so please consider The Wilderness Society's request.

Several Club members have reported the presence of survey markers around the perimeter of the Rocky Valley reservoir in the Alpine National Park. The Kiewa scheme (Southern Hydro) has been sold off and the new private owners want to raise the water level. There are 2 sets of survey pegs, one approx 4' (yep, 4 foot) above the full service level and another approx 8' above FSL. The 8' level will flood back almost to Langford's Gap and sections of the existing High Plains road will have to be moved higher - into the Alpine National Park. The dam wall will have to be raised and extended. My spies tell me that the owners have a lease on the quarry at Basalt Hill, so it's likely that a large chunk will be taken from Basalt and dumped on the wall. My spies further indicated that access to the low-level benches on the wall may be removed. These benches provided good protection when crossing the wall in desperate conditions.



Some of you might have seen or received brochures from your electrical energy supplier offering to sell you energy from sources they guarantee to be from "green" sources. There is a price premium on "green" energy and part of the premium is put toward research into alternate renewable energy sources. I think the premium is for a worthwhile cause, particularly since our state and federal governments have decided not to fund such research. The only problem I have is that I would expect the majority of "green" energy to come from hydro schemes. Given the proposed Rocky Valley extension I would have to seriously question whether Kiewa hydro power can be considered "green". It's a very off-colour murky, muddy-brown to me.

Graeme Thornton

A request from the Wilderness Society

Dear Friend,
A Plea for Help with the Preservation of the Wongungarra Wilderness

Covering an area of over 25,000 hectares, the pristine Wongungarra valley is Victoria's last unprotected wilderness area.

With the fate of Wongungarra to be decided in the Regional Forest Agreement for North East Victoria, The Wilderness Society is stepping up its campaign to persuade the Commonwealth and Victorian government's to protect this unique part of our Alpine heritage. With the final RFA due in the coming months, the Wilderness Society needs your help.

The recent release of preliminary mapping for the North East Forest Management Plan is of deep concern to the conservation movement. It shows that the Kennett government is at this time, not planning to protect the Wongungarra wilderness from logging.

A rugged, inaccessible valley on the southern fall of the Great Dividing Range, the Wongungarra has

miraculously survived the worst impacts of modern technological society. It would be an act of pure vandalism to sacrifice this remarkable area for short term gain now, particularly as it appears that the local timber industry can thrive without having to access the old growth forest of the Wongungarra.

Covering a region of 20,000 hectares within the boundaries of a timber production State Forest, Wongungarra is home to significant stands of old growth Alpine Ash forest, and is a habitat for the critically endangered Spotted tree Frog and threatened Long Footed Potoroo.

With as little as 4% of Victoria remaining as wilderness, it is crucial that areas such as Wongungarra are protected. In 1991, the Land Conservation Council recommended that in the event that the government decides that logging is not to proceed in the northern part of the Wongungarra River catchment, that the area should be proclaimed a wilderness area.

Given the negligible impact which preserving Wongungarra will have on the volume of timber available to the industry in the north east, the case for protecting Wongungarra is overwhelming.

It is time to act.

Amongst the Wilderness Society's campaign activities to preserve the Wongungarra, we are launching a massive letter writing campaign in an attempt to influence the decision of the Minister for Natural Resources and Environment, Mrs Marie Tehan.

As the Wilderness Society's Victorian Campaign Coordinator, I am asking for all of you who have already expressed an interest in the future of this beautiful Alpine Wilderness, to write a letter to the Minister for Natural Resources and Environment Mrs Marie Tehan, urging the Minister to protect Victoria's last unprotected wilderness area for logging.

Yours faithfully,
Gavan McFadzean
Campaign Coordinator - Victorian Branch

Hon Marie Tehan, Minister for Natural Resources and Environment, 8 Nicholson Street, East Melbourne, Vic 3002, also,
Senator Robert Hill, Minister for the Environment, Parliament House, Canberra, ACT, 2600

**Help protect the
Nationally Endangered
Mountain Pygmy Possum
write to:
Robert Maclellan
Minister for Planning**

*Nauru House 80 Collins St Melbourne
3000 and state your dissent to there
not being an EES.*

No Environmental Effects Statement for Mt McKay

The Minister for Planning and Local Government, Mr. Maclellan, has decided that the down-hill skiing proposal for Mt McKay area will not require a formal Environmental Effects Statement. The area was excised from the Alpine National Park by the State Government in late 1997, without public consultation and against the advice of the Director of National Parks.

Another controversial proposal in a nearby part of the Park was simultaneously declared to also not require an EES. This proposal, to raise the level of the Rocky Valley Dam, will flood extensive areas of alpine bogland. The two proposals between them threaten a range of rare species and plant communities in what was, until recently, apparently secure in the Bogong section of the Park.

In an effort to play down the environmental effects at Mt McKay, it is proposed that no formal ski-runs are cut. On these steep slopes, this raises the real possibility that skiers will become injured and/or lost, resulting in future pressure to clear and level the terrain. It will be the most hazardous skifield in Australia.

The Minister has promised some of the elements associated with an Environmental Effects process, including a consultative committee, a two month exhibition, and a public hearing. Nonetheless we are left wondering why use of the Act has been avoided. Is this to fast track the approval of the proposals or to not allow the consideration of a no development options? The process must include the most thorough examination of the environmental impacts and the long term economic viability of the projects.

If these two major proposals for commercial development on land of national significance within our Parks do not evoke Environment Effects Act, what does? Mt Stirling received a comprehensive process under the Environmental Effects Act and Mt McKay an area with greater ecological value deserves no less.

You can help by sending letters off to the Minister for Planning outlining your outrage to the decision to not have an EES. Also demand a thorough process that allows for sufficient time for all interested parties to be involved. We consider that examination of this proposal deserves the same degree of rigour that was afforded to Mt Stirling and that in general the same range of issues needs to be encompassed.

If you want further information or wish to be further involved or to donate to VNPA's on-going work including Mt McKay, contact Peter Barker or Jenny Barnett, at the Victorian National Parks Association on 9650 8296 or email: peterb@vnpa.org.au or jennyb@vnpa.org.au

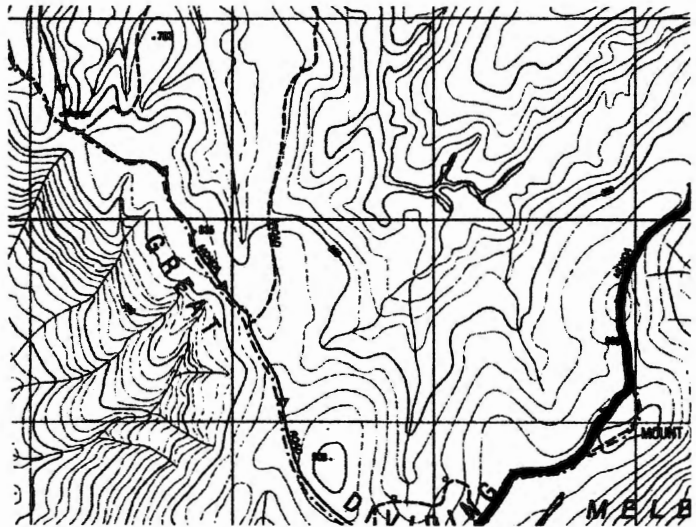
Featuring a 'FEATURE'

Starring this Month

CONTOURS

Contours are the squiggly lines on a topographical map (a detailed representation on a map of the natural features of an area) which represent and outline changes in altitude i.e. the natural features – a coast or mountain mass.

Depending on the scale of the map, each line represents a change in height of 10 metres, 20 metres, etc. – a contour interval. The closer together they are, the steeper the area, the more spread out the gentler the slope.



SOUTHWEST WA:


Flower Power

For the first time since 1994, we are offering a southwest WA trip at the peak of the wildflower season. We travel through a colourful mosaic of tall eucalypt forests, banksia woodlands, scrubs, heaths, orchards, vineyards and farmlands superimposed on rolling hills, granite monadnocks, coastal dunes and limestone cliffs and the flats and rugged uplands of the Stirling Range. The trip will be divided into three sections any of which may be done on

its own. Each section combines a bushwalk of four to six days with drives and daywalks along the newly completed Bibbulmun Track, along the coast and in the Stirling Range.

The trip will be led by Arthur Weston, a professional botanist and expert in the local flora. Under the name Nangar Expeditions, he has been running guided bushwalks since 1977. We don't know if or when we'll be able to offer a trip like this again.

If you want to see one of the world's best displays of wildflowers, this trip is for you. Ask for the trip notes.



Willis's Walkabouts
 12 Carrington St Millner NT 0810
 Email: walkabout@ais.net.au

Phone: (08) 8985 2134

Fax: (08) 8985 2355

Walks in April/May, 1999

Date	Location	Transport	Standard	Leader	Phone No.
May 21 Wed	Kinglake – Mason's Falls	Private	E/M	Max Casley	
May30 – Apr 2	Wilsons Prom	Private	E	Deb Henry	
Apr 1 Sat	May Day Walk: Mt Koala Ridge	Private	M	Leader Required	
2 Sun	Noojee Area	Bus	E/M & M	Sue Ralston & Fiona Gallery	
7-9	Major Mitchell Plateau (Grampians)	Private	E/M	Ralph Blake	
9 Sun	Switzerland Range (0830 start)	Bus	E/M & M	John Kittson & Stuart Mann	
14-16	Tarra-Bulga National Park (Base Camp)	Private	E	Darryl Weinert	
16 Sun	Mt Worth	Bus	E & EM	Peter Havlicek & Margo MacNamara	
19 Wed	Lerderderg East Walk	Private	E/M	Sandra Mutimer	
21-23	Queen Spur-Mt Buggery – Cross Cut Saw	Private	M/H	Bill Metzenthien	
22 Sat	Navigation Day	Private	E	Alan Clarke	
22 Sat	Dandenongs Explorer	Private	E	Michael Humphrey	
23 Sun	Cobaw Ranges	Bus	E/M & M	John Kittson & Bill Donald	
28-30	Kara Kara State Park (Base Camp)	Private	E	Leader Required	
30 Sun	Lal Lal Falls – Mt. Doran	Bus	E & E/M	Brian Crouch & TBA	

The News of the Melbourne Bushwalkers
 Print Post Approved. PP No 33888/00016
 If undelivered please return to:
Melbourne Bushwalkers Inc.
GPO Box 1751Q, Melbourne 3001

**SURFACE
MAIL**

**POSTAGE
PAID
AUSTRALIA**

✂

Renewal of Membership Please complete details

Name

Old Address

New Address.....

Old Phone (h)..... (w)

New Phone (h)..... (w)

Ordinary members	\$25
Concession (proof required)	\$17
Couples	\$36
The News (for non members)	\$15

Make cheques or money orders payable to 'Melbourne Bushwalkers Inc.' and post to Membership Secretary, GPO Box 1751Q, Melbourne, 3001