



NOVEMBER 1999



Social Scene

In this Issue

- *Who's Who In the Melbourne Bushies* (Max Casley)
- *North with Superlope - Part 3*
- *Walk Previews for December*
- *Bushies "Good Food" Guide*
- *Wednesday Night Capers*
- *Conservation Forum*

Members Colour Slide and Print Competition

Theme : Walking around the World
Judge: Sue Bland (Don Weston can't make it)
Date: Wednesday 17 November 1999

Prints will be on display from 7.30pm and colour slides will be shown at 8pm

Come one come all...to the Melbourne Bushies Great Photo Competition.

All members are welcome to enter their prints (mounted on cardboard or in a cardboard frame - because they curl up otherwise) and colour slides.

I am sure that everyone with a camera has at least one favourite print or slide they would like to share with other Bushies. So bring them along.

They will be judged in absentia by Sue Bland (non member photographer) and the winners will be announced at the Bushies Christmas Party on 15 December.

See October *News* for entry details or contact Clare Lonergan or Sylvia Ford

Tent Pitching competition

Two pole tents only

The second round of the tent pitching competition will be held on Wednesday 17 November at 7.30pm sharp.

(Read the results of round one in Wednesday Night Capers on page 3.)

'The Quiet Man' in Kensington

Dinner & Irish Music

Due to popular demand we are returning to this venue on Friday 3rd December 1999 at 7pm
Book with Brian Crouch on before 26 November

From the President

The Committee will shortly be considering the financial recommendations for next year. There are several considerations:

- Our expenditure is exceeding our income
- We shall want to finance a 60th year publication and some millennium celebrations
- Most of the goods and services that we buy will increase by 10% with the implementation of GST

We'll be advising you of any recommendations well before the AGM. In the meantime if you have any thoughts on this please speak to me or one of the Committee.

I've just returned from the Warrambungles National Park in NSW where I spent the long weekend. It's a great park with the remnants of a 13 million year-old volcano as the centrepiece. Lofty, craggy spires, sheer walls, a million grass trees, masses of wild life. Partially spoilt for me though, by an orange coloured, *brick* path along the most popular walks. OK, so the tracks do suffer badly from erosion from so many pounding feet. But orange brick??? The ultimate in durability, no doubt. Expertly laid with great precision, this pathway must have cost a fortune. I would have thought that there are cheaper and more acceptable solutions available.

Derrick Brown

The News is the official newsletter of the Melbourne Bushwalkers Inc. and is published monthly.
Edited by **Clare Lonergan**.

Articles, walk reports, poems, snippets of news, photographs of club events, reports of new gear, book reviews, letters "to the Editor", advertisements, etc. are always welcome. The Editor reserves the right to edit articles, letters or other contributions, where space, clarity or propriety dictate, and to maintain editorial consistency.

Please note that articles for **The News** may be sent to Clare Lonergan by:

- ◆ Placing article in the Red Box in the clubrooms
- ◆ Mailing to:
- ◆ Fax:
- ◆ E-mail:

Advertising Rates:

¼ Page 1 Issue - \$20; 3 Issues - \$50; 12 Issues (1Year) \$180
½ Page 1 Issue - \$30; 3 Issues - \$75; 12 Issues (1 year) \$270
Full Page 1 Issue - \$50; 3 Issues - \$125; 12 Issues (1year) \$450
Only advertisements directly relating to bushwalking will be accepted (e.g. gear, maps, trips, tours, etc);

Members Ads - FREE

**Closing date for December News is
Wednesday 1 December, 1999**

Who's Who in the Melbourne Bushies

Max Casley has been a member of the Melbourne Bushies for some 27 years. He has led many day walks and many weekend and extended walks over the years.



Max Casley

About three years ago Max slipped on a descent down a fairly steep hill and broke his ankle. The party were in a fairly remote area and Max's fellow walkers had to construct a stretcher to carry him out to an area where they could leave him in a tent and go off to seek help. After 24 hours or so help reached Max and he was taken to a country hospital where a steel pin was put in his ankle. However this did not stop Max. As soon as he was able, he was out with an elastic bandage on his ankle attempting easy walks. I was amazed at how quickly he returned to serious walking. By now of course he is loping around the country like a mountain goat and once more leading many walks for the Bushies.

Recently Max celebrated his 60th Birthday at a party hosted by Marisa Rizzuto and Sylvia Ford. As it was a hat party Max was King for the night wearing a golden crown encrusted with precious jewels (courtesy of Sylvia Ford). It was a great night and I know that Max enjoyed it as much as we all did.

I am sure that all Bushies will join with me in thanking Max for all the time he has given to the Club as Walks Secretary, Committee Member and of course leader of countless great walks. Those of us who know Max well know that behind that quiet, reliable exterior is a wicked sense of fun and humour. Every time you hear your phone beep just remember that it was Max who invented that sound!!!

Happy Birthday Max!!!

Clare Lonergan

Meetings are held in the Clubrooms, MacKenzie Street, Melbourne (rear of the Royal Horticultural Society Building) on **WEDNESDAY** evenings between 7.00pm and 9.00pm

*Visitors are always
Welcome!!!*



**General correspondence should be directed to:
The Secretary, Melbourne Bushwalkers Inc.
PO Box 1751Q, Melbourne, 3001**

Wednesday Night Capers



Fun & games at the Club Rooms on Wednesday Nights!



Club Christmas Party

Wednesday 15th December
In Clubrooms

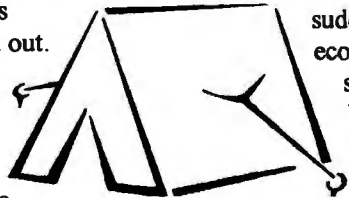


Tent Erecting and Billy Boiling Competition

The first great tent erecting and billy boiling competition was held on 27 October 1999. The Wednesday night at the club rooms waxed wet and windy. "What!" they said, "Put our tents up in the rain?" But fortunately by the time we were ready to start it was barely dripping. Now, how many tents do you expect can be pitched in our club rooms front garden simultaneously? Answer: at least four. And how many different types of tents and stove systems do we use? An amazing number of both. The rules were that the tents and billies should be as they are when you pull them out of your pack i.e. all wrapped/done up. The tents have to be pitched with all guy ropes pegged out.

First off were the single pole competitors. Trishy and Cameron fought a tight exciting battle with Cameron winning and with much wailing and gnashing of teeth from Trishy. As there were so many two pole competitors we had two timed heats. Gina might have won with her Fairy Down Assault tent but she got into a deep discussion with Stuart Mann about the merits of pitching this tent more effectively so the inner and fly don't touch and thereby increasing the air circulation and anyway she never pegs out all the guy ropes..... Ralph's guy ropes got tangled beneath the erected tent so he had to collapse it and start again. So Debbie won that heat in 8 mins, 4 secs. after they had both long thought they'd lost it to Gina. However the next heat was extremely swift with Anne Wilkins putting up a borrowed tent, a MacPac Minaret, in 4 mins. 45 secs. David Laing came a couple of seconds after with his Salewa Microlight and me at 4 mins. 50 secs. Also with a Salewa. Peter McGrath wasn't far off either.

Alas the pairs tent erecting didn't happen as Merylyn went missing (and I don't think Bill brought the tent anyway!); Sak and Marika could have borrowed a tent but Marika felt she wasn't dressed for the part, so there



Choofer/stove "cook up"

with Anne Wilkins

Food and Eating

Everybody loves to do it, so bring along your favourite dehydrated meal and cooker or dried lunch spreads, etc & nibbilies (and the recipe)

There'll be ideas and things to sample. Come and get some ideas for those summer trips.

Queries contact Anne Wilkins

Wednesday 1st December, Clubrooms



was only Derrick and Gina. So we'll have it when the photo competition is on i.e. November 17th at 7.30pm sharp. Of course if any other couples want to be part of this e.g. Alan and Pam, Clare and Alan, Please roll up.

Finally the billy boiling. Everyone was issued with half a litre of water and Bob blew the whistle to start. Stoves and billies clattered out of bags, burners got filled or primed, matches struck and water emptied into billies. Next to me Alan Clarke set fire to the table, and David Laing accused me of pinching his billy. Debbie nearly set fire to her hair and I'm not sure what happened to Trishy as her system was suddenly on the ground. Over all this Pearson's eco-billy was wafting clouds of gum-leaf scented smoke. We were all sure we were out in the bush coughing and spluttering, and laughing. It was a remarkably close contest won by Derrick with his MSR whisper light with a Sigg alloy billy. Next came me with an Optimus set burning metho, then Anne's MSR XGK2, and Alan with his mini Trangia. Pearson's Eco-billy came fifth then David, Ralph who sensibly made a cup of tea, Peter and finally Debbie who reckons its definitely time for a new stove. Trish O.Ded.

Bob Steel was wheeled out as an Ex-President of impeccable, incorruptible high moral standards who acted as timer, judge and trophy presenter all of which he did with a super abundance of the above. Thank you very much Bob. The trophies, red enamel dinner plates for the tent erecting were suitable engraved with "Erection with intent". Derrick is now the "Gun Boiler" for 1999 with a red enamel mug.

Thanks too to Rod Mattingley and Bob Steel who supplied the lighting systems and to Jan Palich who brought along the excellent drinks and nibbles (I do like the Banrock Station Jan). Also thanks to those people who were on Jopie's recent trip to NSW who helped think up the literary offerings. And finally to all those participants who I think enjoyed it just as much as I did. Thank You *Sylvia Ford*

Day Walks for November & December, 1999

Saturday 27 November Easy	Frankston – Saturday Explorer
--------------------------------------	--

Leader	Pam Rosso
Map Reference	Melways Map 102 D-2 (Detail Melways Map 100 A E-7)
Approximate distance	10 km
Transport	Private
Area	Frankston
Expected time of return	4.00pm

We will meet at 10 am in the car park in Fletcher Road, Frankston, beside Frankston Station, so you can get there either by train or car. This will be a one way walk from Frankston to Chelsea, partly through the coastal reserve and partly along the beach with swimming an option if it is hot. At Chelsea we will all catch the train back to Frankston. The fare one way will be \$1.70. There is a lovely cake shop opposite Frankston Station where coffee is served at tables. Please join me there for post-walk recovery.

Sunday 28 November E/Medium & Medium	Tanglefoot – Mt St Leonard
---	---------------------------------------

Leaders	Deb Henry & Sally Bouvier
Approximate distance	14 – 18 km
Transport	Bus from South Bank Boulevard at 9am

There will be two walks, one easy/medium and the other medium.
The Tanglefoot Track is a short distance from Healesville in the surrounds of Mt. St. Leonard. The medium walkers will take a steep walk over Mt. St Leonard. The easy/medium walkers will bypass the summit.

This is a beautiful and undulating track winding through thick bushland. Bird life is a feature with many lyrebird sightings. Those with the energy to climb Mt. St Leonard will be treated to spectacular views.

Saturday 4 December Easy	Track Maintenance
-------------------------------------	--------------------------

Leader	Anne Wilkins
Map reference	Mystery Location

Following hot on the footsteps of previous successful track maintenance days Here's another opportunity to flex those pecs and do something for the tracks we all use and love. Close to Melbourne – Saturday only – treats promised for those who come!!!!

Bus fares

The bus fares for the Sunday walks are as follows :

Members \$15.00,
Concession \$10,
Visitors \$20
Late fee of \$2.00 (for both members & visitors who attend on Sunday without having booked on the walk).

Sunday 14 December E/Medium & Medium	Murrindindi Cascades & Wilhelmina Falls
---	--

Leaders	Max Casley & Marisa Rizzuto
Map Reference	Taggerty South 1:25 000
Approximate distance	16 and 19 km
Transport	Bus from South Bank Boulevard at 9am
Area	South of Yea
Expected time of return	7pm

This is a delightful walk along the Murrindindi River with a few climbs up into the forest for some views, especially of Wilhelmina Falls. We will walk past the Cascades at the start of both walks. The medium group will follow the Booroondarra Track, which involves about 400 metres of climbing in total, and then descend to the river past Wilhelmina Falls. The easy/medium walk will do almost as much climbing, although it may be possible to have some of the climbs as optional. Both walks involve steep descents.

The area has beautiful ferns, mosses, lichens and myrtle beech and sassafras trees. There are historical remains from the sawmilling days to add interest.

Sunday 12 December Easy & E/Medium	Enfield State Park (Ballarat) 8.30 AM START
---	--

Leaders	Peter Havlicek & Brian Crouch
Map Reference	Napoleons, Derrel, Berringa & Smythesdale 1:25 000
Approximate distance	13 & 17 km
Transport	Bus from South Bank Boulevard at 9am
Area	Baalaraat
Expected time of return	7pm

We have not previewed this walk yet, but my recollection from several years ago is of tall gums and deep holes. The latter were dug (for recreation, I presume) by early visitors

to the area and are now inhabited by ghosts, cobolds, and wallabies (our secretary, BW, will corroborate for a small subsidy). Seriously there is only one hill (100 – 140m), plus some undulations of the terrain and for the E/M walkers one lovely compass navigation bushbash. Come and enjoy.

Wednesday 15 December **The Beeches –
E/Medium to Medium** **Steavenson Falls**

Leader Barbara Weston
Transport Private
Area Marysville

This walk will be either The Beeches, Talbot Drive and the west slope of Mt. Margaret, OR, one of a number of walks in the Marysville area. The day we went to preview the Mt Margaret section of the trail, it had snowed quite heavily the night before. It was very pretty and exciting walking in the snow but we were unable to complete the preview. Also, the Beeches Loop has been closed due to a large fallen tree which has destroyed one of the bridges over the Taggerty River. Don't despair however, there is plenty of walking in this area and I can promise a great walk. Ring me for details / see the December News. Phone:

. As this walk is just before Christmas I have a little surprise in store for those who wish to join me.

Sunday 19 December **Airey's Inlet – Lorne**
E/Medium & Easy

Leaders Alan Miller & Jill Dawson
Map Reference The Otways & Shipwreck
 Coast Leisure Map
Approximate distance 13 & 16 km
Transport Bus from South Bank
 Boulevard at 9am
Area Lorne
Expected time of return 7.30pm

The E/M walk starts near the lighthouse at Airey's Inlet while the easy walk starts at Fairhaven. Both walks will end at Lorne North, about 2km north of the centre of Lorne. Both walks will be on the beach for part of the way, and on tessellated rock platforms for the rest of the day. We have checked the tide tables; it will be low tide, so we should have no problems around Cinema Point or below the lighthouse at Airey's Inlet.

Treasurer's Report: Accounts for September 1999	
Opening Balance	\$49,297.77
Receipts	\$1,589.15
Payments	\$2,729.33
Closing Balance	\$48,157.59

Do you like singing Christmas Carols?

If so then join the Bushies own singing group to sing carols at our Christmas Party in the clubrooms on Wednesday December 15th. Ability is not important, all you need is the desire then let your passion grow by giving others a very special gift – your voice. You will even get an opportunity to sing our "Bushies" version of Twelve Days of Christmas. Rehearsals start late November, probably at the clubrooms, so contact the leader, Brian Crouch on . To express your interest. Limited spaces available!!



EQUIPMENT FOR HIRE

The Melbourne Bushies has some great equipment for hire. We suggest that you 'try before you buy'. Get ready for the upcoming mountain high millennium celebrating club trips.

Here is the equipment list and with the current hiring fees and deposits.

	W/end	Weekly	Deposit
Tents	10	20	20
Weekend Packs	5	10	20
DayPack	2	4	8
Sleeping Bags	5	10	20
Sleeping Mat	2	4	4
Trangia Stove	3	6	6
Compasses	2	5	10
Food Dehydrator	5	15	
Track MainTools	5	10	20

If you need help with hiring the club equipment, then see me at Club Night or ring me on

Rod Novak

Duty Roster

17 November Gina & Derrick
*24 November Alan & Clare
1 December Sylvia & Pearson
*8 December Anne & Debbie
15 December Fiona & Trish

Date of next committee meeting:
Monday 29 November 1999
at 7PM OR SHARPER

Weekend & Christmas Walks for December/January

3-5 December Easy	Mt Buffalo Base Camp
------------------------------------	-----------------------------

Leader	Pearson Cresswell
Transport	Private
Map	Mt Buffalo Nat. Park

For those who don't already know, Mt Buffalo is one of the most delightful spots in Victoria for a base camp. There is an extensive network of tracks offering good walks from easy to medium grade, beautiful country, brilliant views, etc. I have reserved three sites at the Lake Catani camping ground, so get your bookings in early (phone Pearson on).

10-12 December Medium	Otways
--	---------------

Leader	Peter Chalkley
Transport	Private



Please see Peter in the Club Rooms for more details with respect to this walk or telephone him on

26-30 December E/Medium	Cobberas – The Pilot
--	-----------------------------

Leader	Sylvia Ford
Transport	Private

Leave Melbourne on 26 December and start walking from 27th December at ???

Ahhh!! This preview has just turned up in a pile of papers and its late for printing already and Clare will shout at me. And Pearson will shout at me too because I haven't even thought about it. Except one thing for sure: we leave Melbourne on Boxing Day and start walking on December 27th and will come out late on Jan 1st or early January 2nd. Other than that we shall do much as we did a few years ago: scale the summits of the Cobberas, find the source of the River Murray and the cairn marking the border of NSW and Vic. And climb the Pilot in splendid weather so we can enjoy the view which is supposed to be smashing!!!

27-2 Jan	Feathertop – Bogong
-----------------	----------------------------

Leader	Deb Henry
Transport	Private
Map	Bogong Alpine Area 1:500,000

If you would like to spend New Years Eve on the highest point in Victoria then this trip is for you. We will begin at the Mt. Loch car park. We will walk to the beginning of the Razor Back, Hotham and walk to the top of Diamantina Spur where we will set up camp and then bag the summit of Feather Top.

Next morning we will head down the Diamantina Spur and up to Westons Hut and camp in this area. Day three will be a long walk but a pleasant one across the high plains to Ropers Hut where we will camp for the night.

Day four, we will head down Duane Spur and up T spur past Cleve Cole Memorial Hut on the way to the summit of Bogong. We will make camp in Stirling Gap where noisy New Year's Eve celebrations will follow.

Day five and we will head along Quartz Ridge, along the Grey Hills, pass and bag Spion Kopje and then head for Edmonson Hut for the night.

Next morning we possibly retrace our steps across the high plains to Swindlers Spur and Dibbin Hut where we will camp for the night.

Day seven, our last, we will head along Swindlers Spur back to Mt Loch car park to the cars and the nearest pub.

Though we are camping in the vicinity of many huts, I will endeavour to seek remote camp sites away from the main track.

26-9 January E/Medium	Round Mountain (NSW)
--	-----------------------------

Leader	Lance Mobbs
Transport	Private

This trip will be predominantly a base camp with a bit of pack carry (refer to flyer).

Even though I have been unable to preview this trip, I have been told there are plenty of wonderful walks in the area, so this will be a great opportunity for people to come along and explore the area, enjoy themselves and welcome in the new millennium.

Any enquiries pleas see me in the club rooms.

Christmas/New Year Period	Blue Mountains Canyons
--	-------------------------------

Leader	Jopie Bodegraven
Transport	Private



Please see Jopie in the Club Rooms for more details with respect to this walk or telephone him on



Conservation Forum



From the *Federation of Victorian Walking Clubs Conservation Committee* (27/10/99)

The FVWC Conservation Committee meets on the fourth Wednesday of each month. This committee has the aim to promote conservation issues that specifically impact on our bushwalking areas. If you would like to raise an issue or report track and/or hut damage, then please contact Rod Novak at Club Night or . At the meeting of 27/10/99 the following issues were discussed: -

Regional Forest Agreements – the Western Victoria and Gippsland Comprehensive Regional Assessment October 1999 (vol. 2) are now available for perusal. Public meetings are scheduled in these local areas for November. Ring DNRE on 9637 8325 to get a copy or try the web on www.rfa.gov.au. Public comment is not yet required, until stage 3 when the *Directions Reports* are released.

Yarra Ranges – Condon's Track now has track markers – almost on every second tree – a Parks Victoria response to the recent media attention with lost walkers on the track.

East Gippsland – help is still required with the project to eradicate Sea Splurge in Croajingalong N.P. Contact Rod Novak for more information.

Snowy River – with the recent Independent's win in East Gippsland the Snowy River is back on the agenda. Recent media reports indicate the Victorian Farmers Federation and the Rice Growers Association will fight any proposed increase in the Snowy River water flow.

Wilson's Prom – the old track to Johnny Suey Cove has been ripped. A new route with tape on trees has been prepared. Also, The Prom coalition have asked the new government to re-instate the Ranger-in-Charge position at Tidal River and for no inappropriate commercial development in the park.

Alpine – Mt McKay: the state ALP election platform is to return the excision to national park status. When? And the Coalition controlled Upper House are issues. Mt Hotham Powerlines – Parks Victoria have yet to grant permission for the digging to commence.

Mt Stirling Users Group – Mt Stirling is suffering from the many users (and conflict of use) in this alpine reserve – e.g. 4 wheel drives, cattle, large horse safari groups, school groups, walkers, groomed trails, lack of funding etc. It is in need of a new management plan. There is a proposal to install public toilets at the 'Cricket pitch'.

Mallee Parks – A Mallee District Action Plan has been

written with 33 environmental projects scheduled for 1999-2000. Parks Victoria are focusing on rabbit control and kangaroo culls?? There are concerns with the spread of Horehound in Wyperfeld NP and a successful trial has occurred with the "burning off" of lake beds. There is concern with the River Red Gum dieback because of the reduced water flow in Outlet Creek.

Bunyip State Park – The Ranger reports track signage will gradually improve over the next six months. Some tracks will be closed on the Black Range for rehabilitation. Walking tracks are planned to have trail bike bollards/barriers installed. Bushwalkers who intend to walk in this park are asked to contact the Ranger – Brett Mitchell on 5968 1280 - for track advice, planned fire-regeneration / cool burn fires and to help him maintain a group users register.

A new Map – Meridian Publications have released a MapGuide of Lerderberg and Werribee Gorges. RRP is \$8.

BBQ Party at G.T. & Tracey's "Muddie"

G.T. and Tracey are looking forward at long last to welcoming you to the christening of their new home (of two years). Champagne punch & horsedooovers provided. You'll enjoy rambling around down the bottom in the remnants of the original orchard. We abut and overlook (medium hard) the Yallambie Reserve and Plenty River. The Victorian Yallambie Homestead is next door. Our house was built for one of the then owner's sons, in 1983, on the site of the original Bakewell Stables, and the bricks were brought out from England as ballast in 1840 and were recycled into our house. History and scenery abound in our delightful niche.

Jeff can't come after all so formal attire is no longer required. Phew! Lucky!!

When: Saturday 27 November from 3pm onwards

Where: .

BYO: Food, drink, chair, glass, etc.

Ring Tracey on for further details.

Social Scene—Some Reviews

Tennis Day: At 10:30 am on Saturday 6th October an eager group of Bushies gathered at the Tulip Street Tennis Courts in Sandringham for a very friendly, non-competitive game of tennis. We were a mixed collection of abilities: two of the party were already injured; Stuart, allegedly, had never held a tennis racket before in his life but he partnered up with Jill who was having a chance day off from her usual weekly competition. Her advice was well taken. The Centre's management went out of their way to make us feel comfortable. The BBQ was fired up about midday and we lazed around for a few hours enjoying the sunshine and watching the more professional groups show us how the game is played. I believe a few other Bushies would have come along but they doubted their abilities! Please do not let this hinder you in future! We plan to do this again and may try for a weeknight with daylight saving now here. Thanks to Trish, Jenny, Stuart, Jill and Michael for a great day.



Dinner Night: The Quiet man is an older style pub in Newmarket/Flemington that has been renovated in recent times and is very spacious and comfortable inside. Most of the staff seem to be Irish or least are able to don the accent when they turn up for work. The band was excellent when we had a social night there back in July. About 25 Bushies attended, most of who came for dinner but some came later for coffee and cake or just for the music. The food was very good with some traditional meals such as Guinness pie. Everyone had a great night. These socials are open to all Bushies. Some members car pooled and others came on their own. Even if you are new to the Club and don't think you'll know anyone when you arrive – you'll certainly know people by the time you leave. Hope to see you at the next dinner on the 3rd December.

Fiona Gallery

Kara Kara Base Camp 23-24 October

Never having been to Kara Kara State Park before I was keen to visit it. Travelling up the Western Highway on Friday night Max and I wondered what the weather would be like this weekend as black clouds loomed above us and rain fell enthusiastically from them. However after leaving Ballarat behind the sky cleared for the stars to come out and we arrived after a slight detour to a dry camp with the fire still burning.

In the morning all fifteen of us set off for our Saturday walk in the north west of the park. It was nice and sunny but a cool breeze didn't let us overheat too much. We climbed to a high point where a fire tower stood guard over the surrounding area. Leaving the summit soon

because the wind had a keen edge to it we walked along the narrow gully and had lunch at the end of it.

As 'the whip' for the weekend I appreciated walking at a reduced pace and took a more than normal interest in the wild flowers as Martin and Jenny tried to identify everyone of them. Lots of birds flew around us and binoculars were out trying to identify them too. Yes Gina I had mine with me this weekend! A leisurely afternoon walk had us back at camp at a most civilized hour. During the afternoon a fox was spotted and stayed in view for a while moving slowly until it got wind of us then hurried away. As the evening progressed the wind increased in strength and a shelter was erected to block out some of it. As the wine flowed interesting stories were told most notably by Fiona when she was a schoolgirl on a school camp. Sunday morning looked nice with a blue sky, lots of sun and no wind. A late start saw us heading uphill south east where the air temperature soon increased. By early afternoon we were back at camp ending a pleasant half day walk. Enroute home we stopped at Talbot for ice creams, walking along the Main Street of the once thriving gold mining town in the biting afternoon sun. Next stop was Clunes which has a lot of solid old buildings including Clementine's BYO Café at 65 Fraser Street. It is run by two Ex Melbourne Bushies, Ron and Pauline, who looked after us very well.

Of note – Kara Kara means quartz in the local Koori language and we saw quite a few lizards in the park but no snakes.

Thank you very much Rod for leading a most enjoyable weekend. We even had the camp ground to ourselves.

Party – Rod (Leader/Organizer), Margaret, Peter, Mary, Patrick, Cathy, Michael, Fiona, Michael, Jenny, Martin, Debbie, Stuart, Max and me, *Cameron McMillan*.

Flora Noad-Turner would like her Bushie friends to come and hear her sing in the Victorian Concert Choir who are performing, with the Camerata Orchestra, Soloists: Kung Xie and Ian Cousins, Conductor: Douglas Heywood, Puccini, Verdi and Rutter in the Melbourne Town Hall on Sunday November 21st, at 2.30pm.

Phone Booking:
 Tickets Adults \$20
 Concession \$17

Life Members	11
Honorary Members	10
Single memberships	353
Family memberships	94 (= 2x 47)
Total membership	468

North with Superjope – Part 3

Ask an Australian bushwalker, even one well acquainted with our northern regions, about the Charnley River in the West Kimberley, and you'll probably be met with a blank look. It isn't well known. In fact the Charnley was almost unexplored by bushwalkers until this year. The famous expeditioner Peter Treseder had ventured down in an inflatable boat, but we had reason to think that bushwalking usage of the area had been minimal. This was one reason for Jopie's fascination with the area. The other reason was that a close examination of the relevant topographic maps indicated two fairly lengthy gorges which looked interesting, as well as several promising side creeks. Hence in late June we found ourselves driving into Beverley Springs Station homestead on the way to the last of our three extended walks. Following our two walks in Kakadu the group had been downsized to a leaner and meaner foursome of Jopie, Jennie, Gina and yours truly. Visiting the isolated homestead at Beverley Springs was an important event in itself, and the nerve-wracking drive to the start of the walk was probably more stressful for Jopie, as driver and owner of the vehicle, than anything which followed in the next two weeks. We finally reached the start of the walk having abandoned the car some five kilometres short of our objective.

Our route involved a two day approach to the most accessible point on the Charnley, a three day transit down river and across country to our lowest campsite on the river, followed by seven days exploration of the gorges moving generally upstream, ending with a two day walk out to the car. The basically out-and-back nature of the route meant that we could leave food dumps on the initial down-river section of the walk.

The first day of the walk was Gina's birthday and she could have chosen a better day. It was a longish day with heavy packs in country that was less than spectacular by Kimberley standards, a day that was necessary as a means to an end, namely reaching the Charnley. Gina, and the rest of us, survived.

During the first two days our minds were partly occupied with the uncertainties that lay ahead in this entirely exploratory walk. Above all would the gorge scenery be spectacular or anti-climactic? Would the walking be physically demanding? Would the valley floor consist of rock platforms (preferred), wall-to-wall water, wall-to-wall scrub, or a chaotic jumble of boulders? Would the waterfalls and gorges be impossible to negotiate without lengthy detours? When would the resident crocodiles change from the freshwater to the saltwater variety? This had obvious implications for swimming! We also contrasted the vegetation and geology with what had become familiar from our walking in Kakadu. The rock was mostly sandstone as per Kakadu but we encountered areas of ingenious dolerite and basalt boulders which slowed our progress somewhat. The vegetation was generally more open than in Kakadu, reflecting a slightly more arid climate. The extraordinary Boab trees, which are a feature of the Kimberley region, stood out as being

totally different from everything else. Some of the land had recently been burnt (in fact fires were still in progress during the first week of our trip) and this made the walking easier. Scenically the high point of the first two days was a short stretch of the Synnot Creek which featured a narrow gorge with spectacular clean rock walls and convenient rock platforms where we set up camp after our second day. We used Synnot Creek as our approach to the Charnley and this little gorge came as a pleasant surprise after an afternoon in a rather uninspiring section of the creek. The walking during these first two days was pretty demanding, mainly due to our packs containing two weeks food.

Early on day three we reached the long awaited Charnley and we lightened our loads by leaving a four-day food dump to be collected on the way back. We proceeded down the river which at this stage was less than impressive. The valley floor was distinctly "bouldery", making for slow progress, and we opted to walk on the cliff top which was broken and scrubby. On day four we left the river and covered nine fairly direct kilometres to another point on the Charnley, thus bypassing about 15 kilometers of river which would occupy us for two and a half wonderful days on the return journey. Our route on day four took us up a small, rather scrubby gorge in a side creek, over a divide and down a pleasant little creek, passing several beautiful waterfalls, to the river. Taking stock of our situation that evening, we'd had four days of fairly strenuous walking. The scenery on the whole had not been great although downstream from our campsite it looked more promising. The group did not feel on top of the world. Jenny was being consumed by ticks which depleted her energy reserve for several days. (Ticks had been encountered on earlier Kimberley trips but this was something different!). Even Superjope admitted to feeling knackered but I suspect this was less from physical exertion than due to our disappointing first impressions of the Charnley.

During the next day the Charnley redeemed itself. Soon after leaving camp we rounded a bend to find the type of gorge scenery that we had been hoping for. We didn't cover much ground that day. The Charnley Gorge assumed major proportions with sheer cliffs rising from the water on the left bank where we were. We were reluctant to cross the river since we were not sure that we were still in freshwater crocodile territory even though we had seen some upstream. So we detoured to the top of the cliff. We soon found a way down and established camp at lunch time at a brilliant location where a substantial side creek entered from our side of the river. The gorge looked superb in both directions. The rock was generally clean and beautifully colourful and the valley floor downstream seemed to offer straightforward walking rather than boulders or scrub. The side creek looked inviting. This was what we had come to the Charnley for! We spent an afternoon lying in the sun and exploring the side creek, which soon led to some delightful waterfalls.

Camp Redemption, as we called it, was our home for two nights. On day six we went down the river as far as we could get. This was further for Jopie and Gina than for Jenny and I. The river gave us the ideal combination of fine scenery and fairly easy walking most of the time. No detours were needed although we had some airy rock traverses. Jopie and Gina explored further downstream and sighted a saltwater crocodile.

For the next six days we followed our river upstream and experienced all the joys that a connoisseur of spectacular rivers could ask for. The section of the river which we had bypassed on the way down was particularly impressive. For much of the time we felt we were in a pure rock and water environment, with the vegetation seemingly remote on the cliff top. The world beyond the cliff top seemed irrelevant. We knew there were no saltwater crocodiles and felt relaxed about swimming and also crossing the river when the walking required it. The walking was sometimes demanding but never desperate and we had ample time for swimming and lying in the sun or the shade. We walked and slept on rock platforms which were often close to the water's edge. Mornings and evenings were particularly beautiful when the lighting was less harsh and the cliffs were more colourful. The campsite

which we called Top Spot was one the most magnificent situations which I personally have experienced.

Days ten and eleven included the section river between the two gorges which Jopie had identified. The landscape here was more open and the river was lined with extensive sand dunes in places. We found it convenient sometimes to leave the river and the scrub was quite manageable. By the end of day eleven we were well into the upper gorge and most of the next day was spent exploring this gorge further upstream as a side trip. This was every bit as impressive as the lower gorge although not as extensive.

Our final two days were spent walking out across country to Jopie's car. If nothing else we will remember the walk out for the campsite where diabolical numbers of flies and mosquitoes enjoyed our company more than we enjoyed theirs. After driving back to Kununurra the group split up. Jopie, Jenny and Gina drove back to Melbourne. Perhaps they were gorged out, although probably not in Jopie's case. I headed for places further west, including the Karijini National Park in the Pilbara. Jopie had said there were more gorges there.

Thank you Jopie for a great trip. The Charnley lived up to our expectations and was a suitable finale to six weeks of fantastic walking.

Jerry Grandage



TENZING'S HIMALAYAN TRAVEL CENTRE

Nepal / India / Sikkim / Bhutan / Tibet

EVEREST TREK: CHRISTMAS MILLENNIUM

Departing Melbourne Christmas Day / New Year Celebrations at Namche Bazaar
Fly to Lukla, Namche – Gokyo – Chugima Pass – Kala Patter - Everest B.C. – Lukla
cost for 27 day trip including the 20 day trek \$4460 ex Melb (incl return Thai flights)

BHUTAN CHOMOLHARI LAYA TREK

Departing Kathmandu 19 April – 10 May 2000
Fly to Paro, trek via, Shana – Lingshi – Shomuthang – Laya – Tashithang
cost for the 22 days including the 13 day trek, \$5550 ex Kathmandu

SIKKIM KANCHENJUNGA TREK

Departing Kathmandu 12 April – 5 May 2000
Fly to Bhadrapur, drive to Darjeeling, trek via, Yuksum – Dzungri / Gocha Pass's
cost for the 24 days including the 13 day trek, \$3400 ex Kathmandu

Darren Miller (also after hours) ph 9395 1210 fax 9395 1216 email parbat@mira.net

“LET TENZING PUT THE WORLD AT YOUR FEET”

Arnhem Land Success!

**Jawoyn
Explorer:
14 May
– 3 June**

The Jawoyn Association, which represents the traditional owners of the region near Katherine, has given us permission to repeat our 1999 trip to the headwaters of the Katherine River in the south-east corner of Kakadu and the south-west corner of Arnhem Land. Both areas are normally out of bounds to bushwalkers.

We will be accompanied by an Aboriginal guide and/or member of the Jawoyn Association staff. We will have a helicopter food drop at the halfway point.

We cannot be sure we will be allowed to run this trip again.

It took us more than ten years to get permission for the first trip. That trip was a resounding success, but the traditional owners have stressed that we cannot take continued access for granted. This is a once in a lifetime opportunity. Where else can you spend three weeks walking through the bush with an Aboriginal guide? If you want to find out more, please ask for the trip notes.

**Willis's
Walkabouts
12 Carrington St
Millner NT 0810
Email: walkabout@ais.net.au**



Phone: (08) 8985 2134 Fax: (08) 8985 2355

Wilkie Update

Thanks to Doug Pocock and team for the annual spring clean. Not only is the cottage spotless and the chimneys clean but the icicle-broken window replaced, the solar powered fence reconnected (this keeps the cattle out of our water supply) and a heap more wood chopped and stacked. These people now get preference next snow season for booking dates i.e. brownie points.

This years snow season saw an almost full Wilkie – 13 of the possible 14 weeks. All the groups had some snow and I think we only had one injury: poor Jan Llewelyn pulled a ham string on their way out which necessitated nine skidoos to rescue her!! Of these 13 groups eight were for MBW members and some guests and five were for outside groups i.e. Maroonda, VMTC, Bunerong, Boarder and a private VMTC group.

I shall be up in Wilkie in the middle of January and the 14, 15 and 16 are an OPEN HOUSE WEEKEND. So do come and join me ESPECIALLY if you have not been to Wilkie before and I shall be delighted to show you the ropes and the local landmarks. Come and chill out in the Bushies greatest asset.

Sylvia Ford

Federation NEWS

The November issue of VicWalk News is on the members' noticeboard. Have a read of this important newsletter the next time you are in the club-rooms. Stay informed with the news of ALL the bushwalking clubs.

The Otways

This was my second weekend trip here and it was as wonderful as the first. The first day we walked about 20 km where the terrain changed from lush rainforest with towering gums and cascading waterfalls to thick scrub, which made things a little hard going.

The second day was a much easier 8 km walk around Lake Elizabeth in cool rainforest where we escaped Melbourne's 28 degree heat. There were a couple of major mishaps when Gerhart had to swerve his jeep down an embankment on a bend in the road to narrowly miss a vehicle displaying L plates that was speeding in the middle of the road. The second was as I was about to put my foot on a rock I saw a snake crossing my path and in an endeavour to avoid it I ended up on all fours while the snake went merrily on its way.

To summarise the weekend, it was a very well organized weekend with great people and wonderful weather.

John Tolmie

Bushies "Good Food" guide.



Benalla - Try Boumeesters Bakery in the main street at 71-73 Bridge Street. Scrumptious pastries, cakes and the coffee is good too.

Clunes - Two ex- Melb Bushies now run the Clementine's Cafe in the main street of Clunes. Pauline and Ron

send their regards to all their Bushie friends, especially a cheerio to their favourite Sunday bus leader - John Kittson. Excellent coffee and liquid refreshments and I can recommend their home-baked Lumberjack Cake. We stopped here on the way home from the successful Kara Kara base camp in mid-October.

Traralgon - We stopped at the Grand Junction Hotel on the way home from Gerry's fantastic four day Melbourne Cup bushwalk to Mt Darling and the Wonnangatta valley. This pub is opposite the Information centre/railway station

New members:
OLGA ABRAHAMS

MARGARET A ENRIGHT

MAREE E MC KEOWN

OTIENO NDONG'A

MARY WEAVEN

Add to membership list:
JANET CROWE
DAVID WALSH

Altered Address/Phone:
TIMOTHY ADAMS

DUNCAN JOHN CATANACH

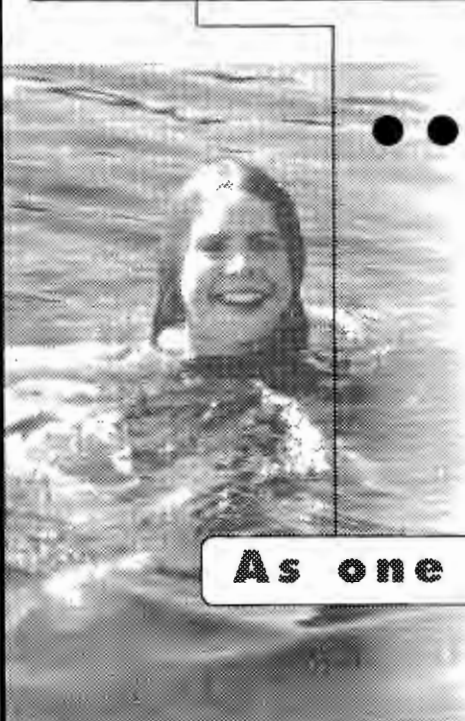
TREVOR DEUTROM

DAVID DURAD / ANNE WILKINS

HELEN FITZGERALD

PAMELA JACKSON

At peace with yourself and the world...



...Relaxed

Would YOU like to feel this way?
It's easy - just join one of our tropical treks.

No phones, no cars, no hassle. Every day brings perfect weather. Every hour brings another beautiful pool. You relax because you are enjoying the moment too much to want to move on.

Ask for our brochure.

As one with nature.

Willis's Walkabouts
12 Carrington St Millner NT 0810
Email: walkabout@ais.net.au



Phone: (08) 8985 2134 Fax: (08) 8985 2355

MAPS & PLANS

BOOKS TO HELP YOU YOUR NEXT WALK

We also have aerial photos of the whole state of Victoria dating back to 1945.

Contact our office to find out the most recent aerial photograph of your area.

VICIMAGE has an extensive range of maps, books and travel guides to help you explore country Victoria, Australia or the world!

- Topographic Maps
- Bushwalking books
- Camping books
- Lonely Planet guides
- Fishing maps and books
- Capital City and State maps
- Compasses and magnifiers
- CDs - Victoria from Space, Australia on CD, Melways on CD.



Qasco/VicImage

171 Clarendon St. South Melbourne.

Ph: (03) 9682 3330 Fax: (03) 9682 3335

Email: melbourne@qasco.com.au



Mention this ad for a 10% discount on your purchase

5 Day Sand Island Wilderness Safari

Fraser Island

Depart Brisbane

The most extensive hiking and walking tour of world Heritage listed Fraser Island. Two great National Park campsites. Experienced Eco-guide/ driver and first class equipment. Delicious meals (including wine) and secure outdoor living with comfortable 4WD transport. We'll look after you!

Explore 8 different lakes

- Walk in a rainforest & eerie sandblows
- See dingoes, turtles, wild dolphins and humpback whales (in season)
- Birdwatching

All inclusive

\$700

Address: 1 Eversleigh Road, Scarborough, Qld. 4020

Phone/fax (07) 3203 4241

Quote "Bushy" for 10% discount in 1999
Group (5 or more) discount 15%

Carnarvon Gorge

6 Day Outback Explorer

Depart Brisbane

Camped in Carnarvon National Park under a palm and cycad forest: native animals abound, platypus in Carnarvon Creek, birds galore.

10% discount

This is Queensland's Outback Oasis

And more - from the campsite depart magical walking and hiking trails to the moss garden, hell hole gorge, the amphitheatre, cathedral cave, aboriginal rock art, and on and on..... For the best walking in Outback.

All inclusive

\$770

Quote "Bushy" for 10% discount in 1999

For registration or a brochure please contact Terry Howard



Sunover Expeditions

10 years touring service



17 Wed	BELGRAVE/EMERALD	Private	E/M	Allister Rowe	
19-21	STRONACHS CAMP - MT ST GWINEAR	Private	E	Alan Ide	
21 Sun	SAN REMO - KILCUNDA	Bus	E & E/M	Lynda Larkin & Clare Lonergan	#
26-28	MT McDONALD - THE BLUFF	Private	H	Cameron McMillan	
27 Sat	FRANKSTON EXPLORER	Private	E	Pam Rosso	
27/28	SUNRISE WALK	Private	E	Stuart Mann	
28 Sun	TANGLEFOOT - MT ST LEONARD	Bus	EM/M	Debbie Henry & Sally Bourvier	#
3-5	MT BUFFALO BASE CAMP	Private	E	Pearson Cresswell	
4 Sat	TRACK MAINTENANCE	Private	E	Anne Wilkinson	#
5 Sun	MURRINDINDI CASCADES & WILHELMINA FALLS	Bus	E/M & M	Max Casley & Marisa Rizzuto	#
10-12	OTWAYS	Private	M	Peter Chalkley	
12 Sun	ENFIELD STATE PARK (BALLARAT) 8.30AM START	Bus	E & E/M	Peter Havlicek & Brian Crouch	#
15 Wed	THE BEECHES - STEAVENSON FALLS	Private	E/M	Barbara Weston	
19 Sun	AIREY'S INLET - LORNE	Bus	E/M & M	Alan Miller & Jill Dawson	
CHRISTMAS TRIPS					
26-30	COBBERAS - THE PILOT	Private	E/M	Sylvia Ford	
27-2 Jan	FEATHERTOP - BOGONG	Private	M	Deb Henry	
26-9 Jan	ROUND MOUNTAIN (NSW)	Private	E/M	Lance Mobbs	
TBA	BLUE MOUNTAINS CANYONS	Private	E/M	Jopie Bodegraven	

The News of the Melbourne Bushwalkers
 Print Post Approved. PP No 338888/00016
 If undelivered please return to:
Melbourne Bushwalkers Inc.
GPO Box 1751Q, Melbourne 3001

**SURFACE
 MAIL**

**POSTAGE
 PAID
 AUSTRALIA**

Change of address and/or phone number

Name

Old Address

New Address.....

Old Phone (h)..... (w).....

New Phone (h)..... (w).....

**Make cheques or money orders payable to 'Melbourne Bushwalkers Inc.' and post to:
 Membership Secretary, GPO Box 1751Q, Melbourne, 3001**